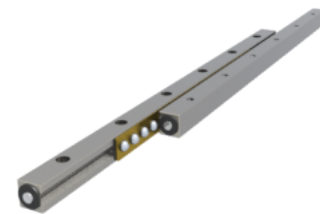
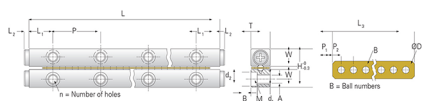


GBV12 - 600

Call 800-321-7800 or visit us online at www.nookindustries.com to configure and order your GBV12 - 600 today!



Product Info

Part Number	GBV12 - 600
Max Stroke [mm]	496

Material Specification

Rail	SUJ2
Roller	SUJ2
Retainer	Phosphor Bronze C5191

Dimensions

H [mm]	58
T [mm]	28
W [mm]	26.9
L [mm]	600
n [mm]	12
P [mm]	100
L1 [mm]	50
L2 [mm]	3.5
$\varnothing D$ [mm]	$\varnothing 12$
L3 [mm]	365
R [mm]	18
P1 [mm]	12.5
P2 [mm]	20
A [mm]	12
M	M10
d1 [mm]	8.5
d2 [mm]	13.5
B [mm]	8.2

Performance Specifications

Dynamic C [N]	300
Static C0 [N]	1320
Capacity Per Bearing [N]	440

Weight

Per Rail [g]	6201
--------------	------