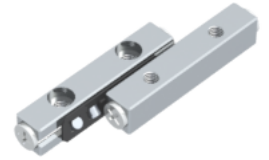
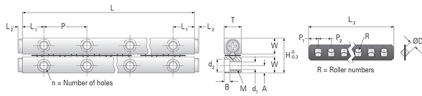


## GRVP02 - 30 - S

Call 800-321-7800 or visit us online at [www.nookindustries.com](http://www.nookindustries.com) to configure and order your GRVP02 - 30 - S today!



| Product Info               |                 |
|----------------------------|-----------------|
| Part Number                | GRVP02 - 30 - S |
| Max Stroke [mm]            | 24              |
| Material Specification     |                 |
| Rail                       | SUS440C + Ni    |
| Roller                     | 100Cr6          |
| Retainer                   | POM Plastic     |
| Dimensions                 |                 |
| H [mm]                     | 12              |
| T [mm]                     | 6               |
| W [mm]                     | 5.5             |
| L [mm]                     | 30              |
| n [mm]                     | 4               |
| P [mm]                     | 15              |
| L1 [mm]                    | 7.5             |
| L2 [mm]                    | 1.5             |
| ØD [mm]                    | 2               |
| L3 [mm]                    | 19.5            |
| R [mm]                     | 5               |
| P1 [mm]                    | 2.8             |
| P2 [mm]                    | 4               |
| A [mm]                     | 2.5             |
| M                          | M3              |
| d1 [mm]                    | 2.55            |
| d2 [mm]                    | 4.4             |
| B [mm]                     | 2               |
| Performance Specifications |                 |
| Dynamic C [N]              | 293             |
| Static C0 [N]              | 292             |
| Capacity Per Bearing [N]   | 97              |
| Weight                     |                 |
| Per Rail [g]               | 14              |