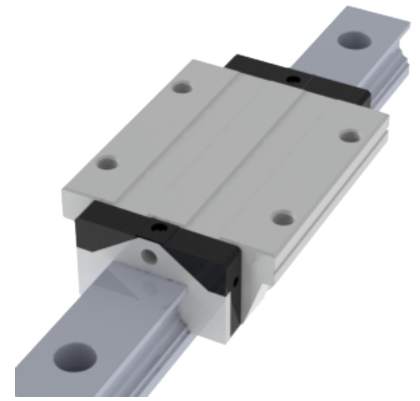
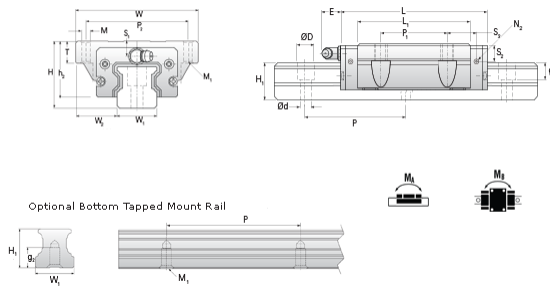


## NHRC 45 FL Assembly

Call 800-321-7800 or visit us online at [www.nookindustries.com](http://www.nookindustries.com) to configure and order your NHRC 45 FL Assembly today!



<b>Dimensions</b>	
H [mm]	60
W2 [mm]	37.5
<b>Long Caged Ball Block Four Mounting Holes (Runner Block)Details</b>	
Size [mm]	45
<b>(Runner Block)Dimensions</b>	
W [mm]	120
L [mm]	171.5
L1 [mm]	138.5
h2 [mm]	50.7
P1 [mm]	80
P2 [mm]	100
M1 [mm]	M10 Thru Bolt
M × g2	M12 × 18
T [mm]	19
N1	PT1/8 × 12.5
N2	M6 × 10.5
N3 [O-Ring Seal]	P5
E [mm]	14
S1 [mm]	11.1
S2 [mm]	18.1
S3 [mm]	35
S4 [mm]	35
<b>(Runner Block)Forces and Torques</b>	
Basic Load Ratings C [kN]	89.5
Basic Load Ratings C0 [kN]	169.1
Static Moment Ratings-Ma [N-m]	3460.0
Static Moment Ratings-Mb [N-m]	3460.0
Static Moment Ratings-Mc [N-m]	4430.0
<b>(Runner Block)Weight</b>	
Weight-Block [g]	4280
<b>Caged Ball Rail Top Mount (Top Mount Rail)Details</b>	
Size [mm]	45
<b>(Top Mount Rail)Dimensions</b>	
W1 [mm]	45
H1 [mm]	39
P [mm]	105
D [mm]	20
d1 [mm]	14
g1 [mm]	17
<b>(Top Mount Rail)Weight</b>	
Weights-Rail [g/m]	10530.0
<b>Caged Ball Rail Bottom Tapped Mount (Bottom Mount Rail)Details</b>	
Size [mm]	45
<b>(Bottom Mount Rail)Dimensions</b>	
W1 [mm]	45
H1 [mm]	39
P [mm]	105
M × g3	M12 × 19
<b>(Bottom Mount Rail)Weight</b>	
Weights-Rail [g/m]	10530.0