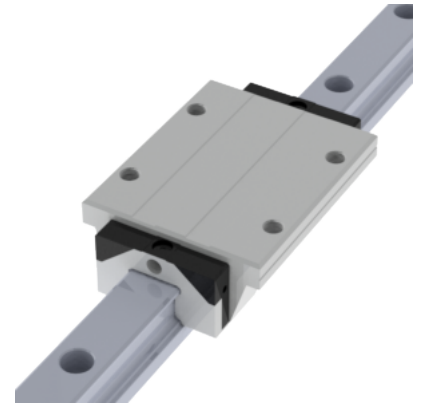
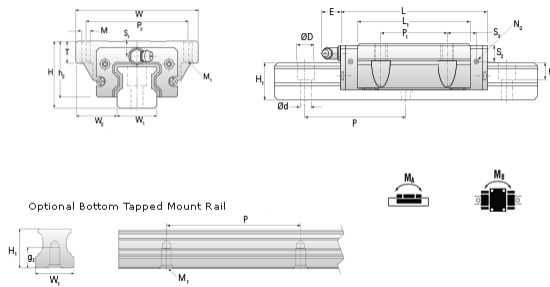


## NHRC 25 FL Assembly

Call 800-321-7800 or visit us online at [www.nookindustries.com](http://www.nookindustries.com) to configure and order your NHRC 25 FL Assembly today!



<b>Dimensions</b>	
H [mm]	36
W2 [mm]	23.5
<b>Long Caged Ball Block Four Mounting Holes (Runner Block)Details</b>	
Size [mm]	25
<b>(Runner Block)Dimensions</b>	
W [mm]	70
L [mm]	105
L1 [mm]	86
h2 [mm]	30
P1 [mm]	45
P2 [mm]	57
M1 [mm]	M6 Thru Bolt
M × g2	M8 × 12
T [mm]	12
N1	M6 × 7.5
N2	M3 × 6.5
N3 [O-Ring Seal]	P4
E [mm]	12
S1 [mm]	8
S2 [mm]	12.3
S3 [mm]	23.5
S4 [mm]	24.5
<b>(Runner Block)Forces and Torques</b>	
Basic Load Ratings C [kN]	30.7
Basic Load Ratings C0 [kN]	57.7
Static Moment Ratings-Ma [N-m]	710.0
Static Moment Ratings-Mb [N-m]	710.0
Static Moment Ratings-Mc [N-m]	735.0
<b>(Runner Block)Weight</b>	
Weight-Block [g]	605
<b>Caged Ball Rail Top Mount (Top Mount Rail)Details</b>	
Size [mm]	25
<b>(Top Mount Rail)Dimensions</b>	
W1 [mm]	23
H1 [mm]	23
P [mm]	60
D [mm]	11
d1 [mm]	7
g1 [mm]	9
<b>(Top Mount Rail)Weight</b>	
Weights-Rail [g/m]	3020.0
<b>Caged Ball Rail Bottom Tapped Mount (Bottom Mount Rail)Details</b>	
Size [mm]	25
<b>(Bottom Mount Rail)Dimensions</b>	
W1 [mm]	23
H1 [mm]	23
P [mm]	60
M × g3	M6 x 12
<b>(Bottom Mount Rail)Weight</b>	
Weights-Rail [g/m]	3020.0