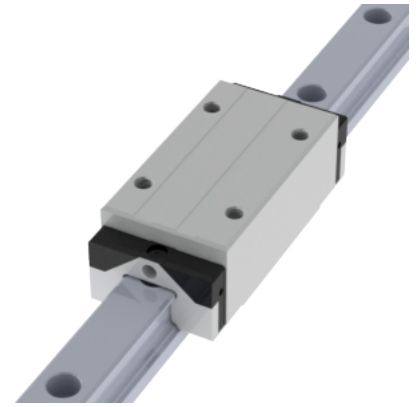
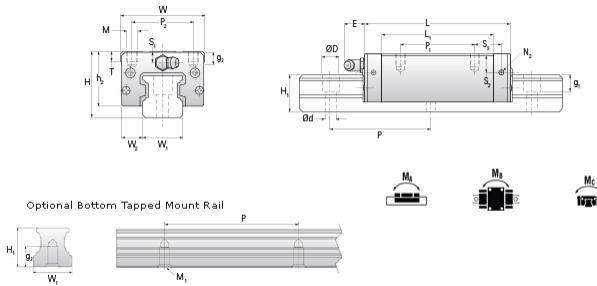


NHRC 25 ML Assembly

Call 800-321-7800 or visit us online at www.nookindustries.com to configure and order your NHRC 25 ML Assembly today!



Dimensions	
H [mm]	40
W2 [mm]	12.5
Long Caged Ball Block Four Mounting Holes (Runner Block)Details	
Size [mm]	25
(Runner Block)Dimensions	
W [mm]	48
L [mm]	105
L1 [mm]	86
h2 [mm]	34
P1 [mm]	50
P2 [mm]	35
M1 [mm]	—
M × g2	M6 × 9
T [mm]	12
N1	M6 × 7.5
N2	M3 × 6.5
N3 [O-Ring Seal]	P4
E [mm]	12
S1 [mm]	12
S2 [mm]	16.3
S3 [mm]	21
S4 [mm]	22
(Runner Block)Forces and Torques	
Basic Load Ratings C [kN]	30.7
Basic Load Ratings C0 [kN]	57.7
Static Moment Ratings-Ma [N-m]	710.0
Static Moment Ratings-Mb [N-m]	710.0
Static Moment Ratings-Mc [N-m]	735.0
(Runner Block)Weight	
Weight-Block [g]	685
Caged Ball Rail Top Mount (Top Mount Rail)Details	
Size [mm]	25
(Top Mount Rail)Dimensions	
W1 [mm]	23
H1 [mm]	23
P [mm]	60
D [mm]	11
d1 [mm]	7
g1 [mm]	9
(Top Mount Rail)Weight	
Weights-Rail [g/m]	3020.0
Caged Ball Rail Bottom Tapped Mount (Bottom Mount Rail)Details	
Size [mm]	25
(Bottom Mount Rail)Dimensions	
W1 [mm]	23
H1 [mm]	23
P [mm]	60
M × g3	M6 × 12
(Bottom Mount Rail)Weight	
Weights-Rail [g/m]	3020.0