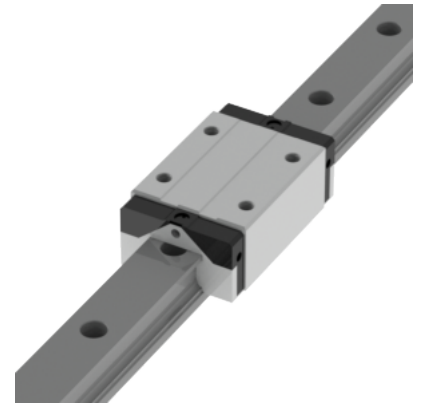
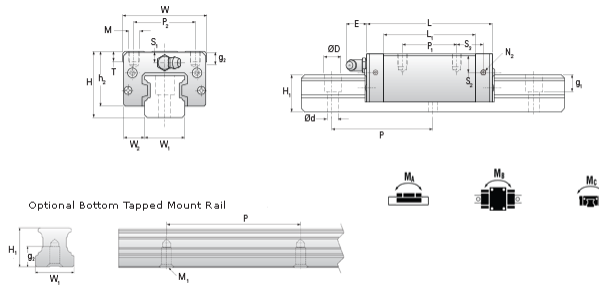


## NARC 35 MN Assembly

Call 800-321-7800 or visit us online at [www.nookindustries.com](http://www.nookindustries.com) to configure and order your NARC 35 MN Assembly today!



<b>Dimensions</b>	
H [mm]	48
W2 [mm]	18
<b>Standard Caged Ball Block Four Mounting Holes (Runner Block)Details</b>	
Size [mm]	35
<b>(Runner Block)Dimensions</b>	
W [mm]	70
L [mm]	111.2
L1 [mm]	86.2
h2 [mm]	40.4
P1 [mm]	50
P2 [mm]	50
M1 [mm]	—
M × g2	M8 × 13
T [mm]	14
N1	M6 × 10
N2	M6 × 7
N3 [O-Ring Seal]	P5
E [mm]	12
S1 [mm]	8
S2 [mm]	15
S3 [mm]	23.4
S4 [mm]	24.1
<b>(Runner Block)Forces and Torques</b>	
Basic Load Ratings C [kN]	45.9
Basic Load Ratings C0 [kN]	82.9
Static Moment Ratings-Ma [N-m]	1080.0
Static Moment Ratings-Mb [N-m]	1080.0
Static Moment Ratings-Mc [N-m]	1700.0
<b>(Runner Block)Weight</b>	
Weight-Block [g]	1120
<b>Caged Ball Rail Top Mount (Top Mount Rail)Details</b>	
Size [mm]	35
<b>(Top Mount Rail)Dimensions</b>	
W1 [mm]	34
H1 [mm]	32
P [mm]	80
D [mm]	14
d1 [mm]	9
g1 [mm]	12
<b>(Top Mount Rail)Weight</b>	
Weights-Rail [g/m]	6790.0
<b>Caged Ball Rail Bottom Tapped Mount (Bottom Mount Rail)Details</b>	
Size [mm]	35
<b>(Bottom Mount Rail)Dimensions</b>	
W1 [mm]	34
H1 [mm]	32
P [mm]	80
M × g3	M8 × 15
<b>(Bottom Mount Rail)Weight</b>	
Weights-Rail [g/m]	6790.0