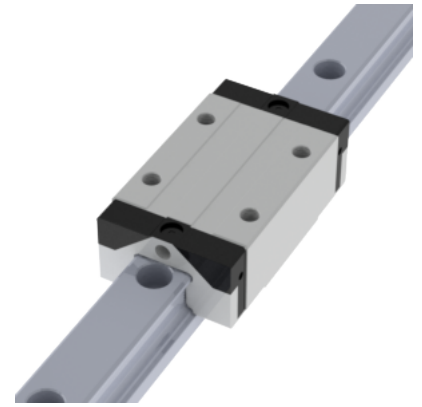
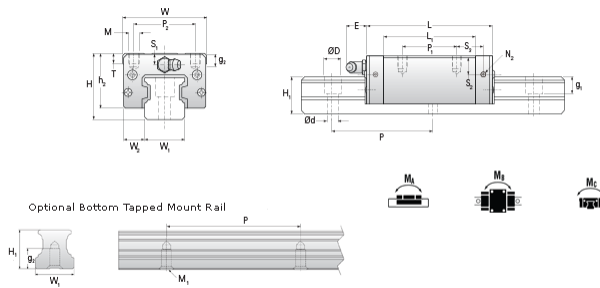


## NARC 25 MN Assembly

Call 800-321-7800 or visit us online at [www.nookindustries.com](http://www.nookindustries.com) to configure and order your NARC 25 MN Assembly today!



<b>Dimensions</b>	
H [mm]	33
W2 [mm]	12.5
<b>Standard Caged Ball Block Four Mounting Holes (Runner Block)Details</b>	
Size [mm]	25
<b>(Runner Block)Dimensions</b>	
W [mm]	48
L [mm]	81.2
L1 [mm]	62.2
h2 [mm]	27
P1 [mm]	35
P2 [mm]	35
M1 [mm]	—
M × g2	M6 × 9
T [mm]	8
N1	M6 × 7.5
N2	M3 × 6.5
N3 [O-Ring Seal]	P4
E [mm]	12
S1 [mm]	5
S2 [mm]	9.3
S3 [mm]	16.6
S4 [mm]	17.6
<b>(Runner Block)Forces and Torques</b>	
Basic Load Ratings C [kN]	24.8
Basic Load Ratings C0 [kN]	42.5
Static Moment Ratings-Ma [N-m]	385.0
Static Moment Ratings-Mb [N-m]	385.0
Static Moment Ratings-Mc [N-m]	540.0
<b>(Runner Block)Weight</b>	
Weight-Block [g]	420
<b>Caged Ball Rail Top Mount (Top Mount Rail)Details</b>	
Size [mm]	25
<b>(Top Mount Rail)Dimensions</b>	
W1 [mm]	23
H1 [mm]	23
P [mm]	60
D [mm]	11
d1 [mm]	7
g1 [mm]	9
<b>(Top Mount Rail)Weight</b>	
Weights-Rail [g/m]	3020.0
<b>Caged Ball Rail Bottom Tapped Mount (Bottom Mount Rail)Details</b>	
Size [mm]	25
<b>(Bottom Mount Rail)Dimensions</b>	
W1 [mm]	23
H1 [mm]	23
P [mm]	60
M × g3	M6 × 12
<b>(Bottom Mount Rail)Weight</b>	
Weights-Rail [g/m]	3020.0