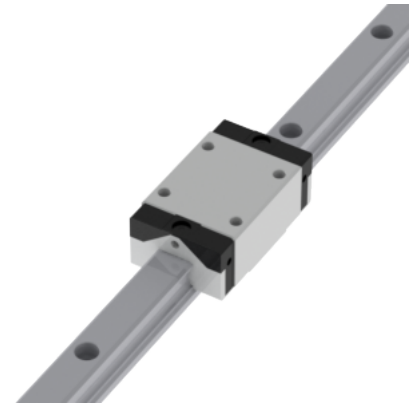
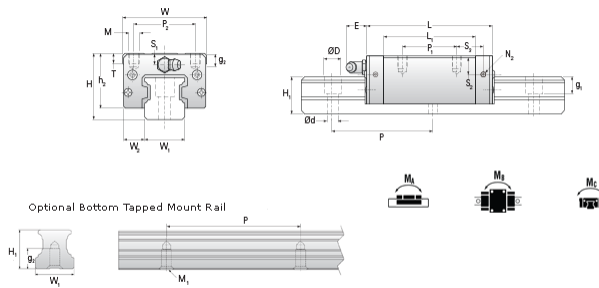


## NARC 15 MN Assembly

Call 800-321-7800 or visit us online at [www.nookindustries.com](http://www.nookindustries.com) to configure and order your NARC 15 MN Assembly today!



<b>Dimensions</b>	
H [mm]	24
W2 [mm]	9.5
<b>Standard Caged Ball Block Four Mounting Holes (Runner Block)Details</b>	
Size [mm]	15
<b>(Runner Block)Dimensions</b>	
W [mm]	34
L [mm]	55.9
L1 [mm]	40.3
h2 [mm]	20.7
P1 [mm]	26
P2 [mm]	26
M1 [mm]	—
M × g2	M4 × 7
T [mm]	6
N1	M3 × 6.5
N2	M3 × 6
N3 [O-Ring Seal]	P3
E [mm]	3.5
S1 [mm]	4.5
S2 [mm]	7.5
S3 [mm]	9.8
S4 [mm]	10.9
<b>(Runner Block)Forces and Torques</b>	
Basic Load Ratings C [kN]	9.9
Basic Load Ratings C0 [kN]	17.5
Static Moment Ratings-Ma [N-m]	105.0
Static Moment Ratings-Mb [N-m]	105.0
Static Moment Ratings-Mc [N-m]	140.0
<b>(Runner Block)Weight</b>	
Weight-Block [g]	142
<b>Caged Ball Rail Top Mount (Top Mount Rail)Details</b>	
Size [mm]	15
<b>(Top Mount Rail)Dimensions</b>	
W1 [mm]	15
H1 [mm]	15
P [mm]	60
D [mm]	7.5
d1 [mm]	4.5
g1 [mm]	5.3
<b>(Top Mount Rail)Weight</b>	
Weights-Rail [g/m]	1290.0
<b>Caged Ball Rail Bottom Tapped Mount (Bottom Mount Rail)Details</b>	
Size [mm]	15
<b>(Bottom Mount Rail)Dimensions</b>	
W1 [mm]	15
H1 [mm]	15
P [mm]	60
M × g3	M5 × 8
<b>(Bottom Mount Rail)Weight</b>	
Weights-Rail [g/m]	1290.0