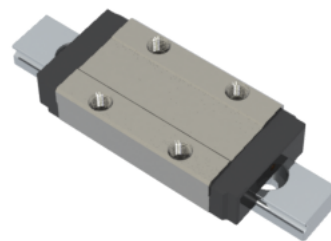


## NMR 9ML SS Assembly

Call 800-321-7800 or visit us online at [www.nookindustries.com](http://www.nookindustries.com) to configure and order your NMR 9ML SS Assembly today!



|   |          |
|---|----------|
| <b>Dimensions</b>   |          |
| H [mm]  | 10       |
| W2 [mm]   | 5.5      |
| <b>Standard Miniature Block Four Mounting Holes (Runner Block)Details</b>     |          |
| Size [mm]   | 9        |
| <b>(Runner Block)Dimensions</b>   |          |
| W [mm]  | 20       |
| L [mm]  | 40.9     |
| L1 [mm]   | 30.8     |
| h2 [mm]   | 7.8      |
| P1 [mm]   | 16       |
| P2 [mm]   | 15       |
| M × g2  | M3 × 3.0 |
| Ø [mm]  | 1.3      |
| S [mm]  | 2.2      |
| T [mm]  | 3.3      |
| <b>(Runner Block)Forces and Torques</b>                                       |          |
| Basic Load Ratings C [N]  | 2135     |
| Basic Load Ratings C0 [N]   | 3880     |
| Static Moment Ratings-Ma [N-m]  | 12.4     |
| Static Moment Ratings-Mb [N-m]  | 12.4     |
| Static Moment Ratings-Mc [N-m]  | 18.2     |
| <b>(Runner Block)Weight</b>   |          |
| Weight-Block [g]  | 28       |
| <b>Standard Miniature Rail Top Mount (Top Mount Rail)Details</b>              |          |
| Size [mm]   | 9        |
| <b>(Top Mount Rail)Dimensions</b>   |          |
| H [mm]  | 10       |
| W1 [mm]   | 9        |
| H1 [mm]   | 5.5      |
| P [mm]  | 20       |
| D [mm]  | 6        |
| d1 [mm]   | 3.5      |
| g1 [mm]   | 3.5      |
| <b>(Top Mount Rail)Weight</b>   |          |
| Weights-Rail [g/m]  | 301.0    |
| <b>Standard Miniature Rail Bottom Tapped Mount (Bottom Mount Rail)Details</b> |          |
| Size [mm]   | 9        |
| <b>(Bottom Mount Rail)Dimensions</b>  |          |
| H1 [mm]   | 5.5      |
| W1 [mm]   | 9        |
| P [mm]  | 20       |
| M1  | M4 x 0.7 |
| <b>(Bottom Mount Rail)Weight</b>  |          |
| Weights-Rail [g/m]  | 301.0    |