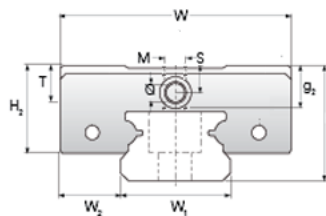
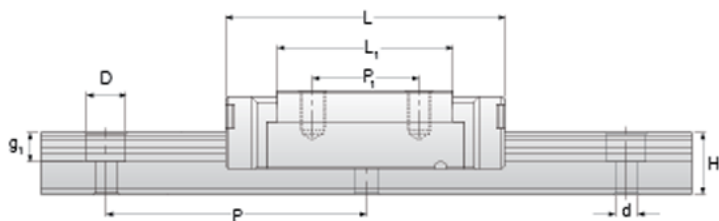
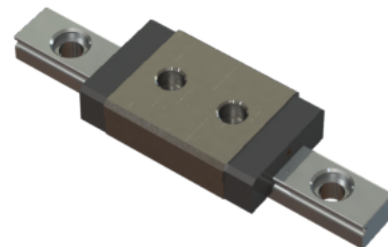
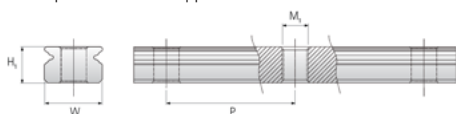


## NMR 5ML SS Assembly

Call 800-321-7800 or visit us online at [www.nookindustries.com](http://www.nookindustries.com) to configure and order your NMR 5ML SS Assembly today!



Optional Bottom Tapped Mount Rail



### Dimensions

H [mm]	6
W2 [mm]	3.5

### Standard Miniature Block Two Axial Mounting Holes (Runner Block)Details

Size [mm]	5
-----------	---

### (Runner Block)Dimensions

W [mm]	12
L [mm]	19.6
L1 [mm]	13.5
h2 [mm]	4.5
P1 [mm]	7
M × g2	M2.6 × 2.0
Ø	0.7
S	1.3
T	2

### (Runner Block)Forces and Torques

Basic Load Ratings C [N]	470
Basic Load Ratings C0 [N]	900
Static Moment Ratings-Ma [N-m]	2.1
Static Moment Ratings-Mb [N-m]	2.1
Static Moment Ratings-Mc [N-m]	2.4

### (Runner Block)Weight

Weight-Block [g]	4
------------------	---

### Standard Miniature Rail Top Mount

#### (Top Mount Rail)Details

Size [mm]	5
-----------	---

#### (Top Mount Rail)Dimensions

H [mm]	6
W1 [mm]	5
H1 [mm]	3.5
P [mm]	15
D [mm]	3.5
d1 [mm]	2.4
g1 [mm]	1

#### (Top Mount Rail)Weight

Weights-Rail [g/m]	116.0
--------------------	-------

### Standard Miniature Rail Bottom Tapped Mount

#### (Bottom Mount Rail)Details

Size [mm]	5
-----------	---

#### (Bottom Mount Rail)Dimensions

H1 [mm]	3.5
W1 [mm]	5
P [mm]	15
M1	M3 × .05

#### (Bottom Mount Rail)Weight

Weights-Rail [g/m]	-
--------------------	---