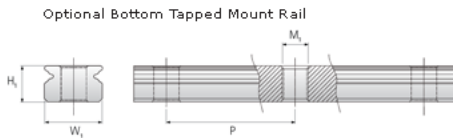
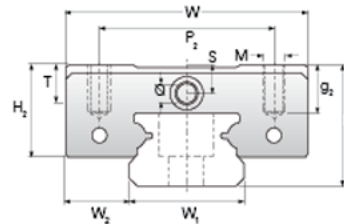
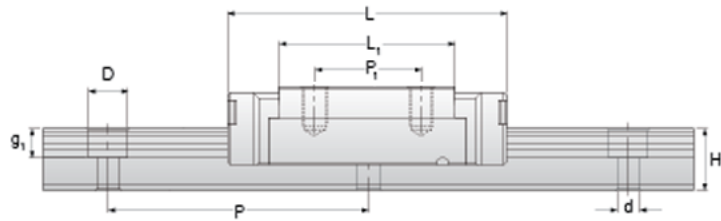
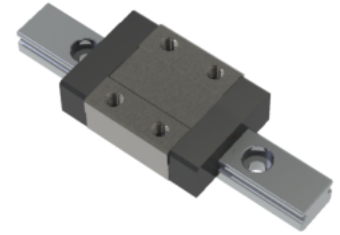


## NMR 7MN ZU Assembly

Call 800-321-7800 or visit us online at [www.nookindustries.com](http://www.nookindustries.com) to configure and order your NMR 7MN ZU Assembly today!



### Dimensions

H [mm]	8
W2 [mm]	5

### Standard Miniature Block Four Mounting Holes (Runner Block)Details

Size [mm]	7
-----------	---

### (Runner Block)Dimensions

W [mm]	17
L [mm]	23.7
L1 [mm]	14.3
h2 [mm]	6.7
P1 [mm]	8
P2 [mm]	12
M × g2	M2 × 2.5
Ø [mm]	1.1
S [mm]	1.6
T [mm]	2.8

### (Runner Block)Forces and Torques

Basic Load Ratings C [N]	890
Basic Load Ratings C0 [N]	1400
Static Moment Ratings-Ma [N-m]	3.3
Static Moment Ratings-Mb [N-m]	3.3
Static Moment Ratings-Mc [N-m]	5.2

### (Runner Block)Weight

Weight-Block [g]	8
------------------	---

### Standard Miniature Rail Top Mount (Top Mount Rail)Details

Size [mm]	7
-----------	---

### (Top Mount Rail)Dimensions

H [mm]	8
W1 [mm]	7
H1 [mm]	4.7
P [mm]	15
D [mm]	4.2
d1 [mm]	2.4
g1 [mm]	2.3

### (Top Mount Rail)Weight

Weights-Rail [g/m]	215.0
--------------------	-------

### Standard Miniature Rail Bottom Tapped Mount (Bottom Mount Rail)Details

Size [mm]	7
-----------	---

### (Bottom Mount Rail)Dimensions

H1 [mm]	4.7
W1 [mm]	7
P [mm]	15
M1	M3 x .05

### (Bottom Mount Rail)Weight

Weights-Rail [g/m]	215.0
--------------------	-------