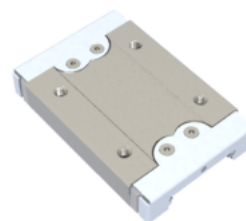
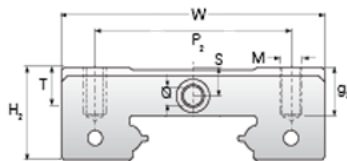


NMR 12WL EE

Call 800-321-7800 or visit us online at www.nookindustries.com to configure and order your NMR 12WL EE today!



Details

Size [mm]	12
-----------	----

Dimensions

W [mm]	40
L [mm]	60.8
L1 [mm]	46
h2 [mm]	10.9
P1 [mm]	28
P2 [mm]	28
M × g2	M3 × 3.5
Ø [mm]	1.3
S [mm]	3.1
T [mm]	4.5

Forces and Torques

Basic Load Ratings C [N]	4070
Basic Load Ratings C0 [N]	7800
Static Moment Ratings-Ma [N-m]	95.6
Static Moment Ratings-Mb [N-m]	56.4
Static Moment Ratings-Mc [N-m]	56.4

Weight

Weight-Block [g]	96
------------------	----