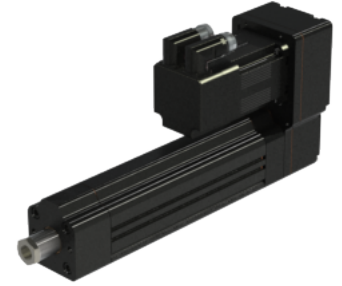
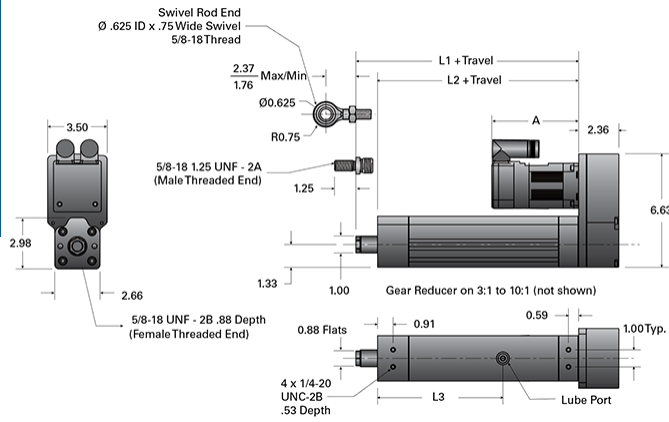


PA05-P 0750-0500 SRT RA V

Call 800-321-7800 or visit us online at www.nookindustries.com to configure and order your PA05-P 0750-0500 SRT RA V today!



Details

| | |
|---------------------------|------------------|
| Screw | 0750-0500 SRT RA |
| Ball Circle Diameter [in] | 0.750 |
| Screw Lead [in] | 0.500 |

Performance Specifications

| | |
|--|-------|
| Lead Accuracy +/- [in/in] | 0.004 |
| Efficiency [%] | >90 |
| Ball Nut Max Velocity [in/min] | 2000 |
| Max Capacity [lb] | 1000 |
| Dynamic Load [lb] (Ball screw L10 life based on 1 mil. Inches of travel) | 2723 |

Dimensions

| | |
|----------------------------------|-------|
| L1 + Travel [in] | 10.10 |
| L2 + Travel [in] | 8.83 |
| A (w/out Reducer, No Brake) [in] | 5.42 |
| A (w/out Reducer, Brake) [in] | 6.96 |
| A (w/Reducer, No Brake) [in] | 8.09 |
| A (w/Reducer, Brake) [in] | 9.62 |