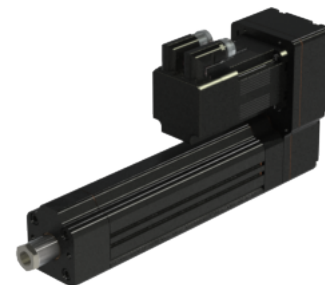
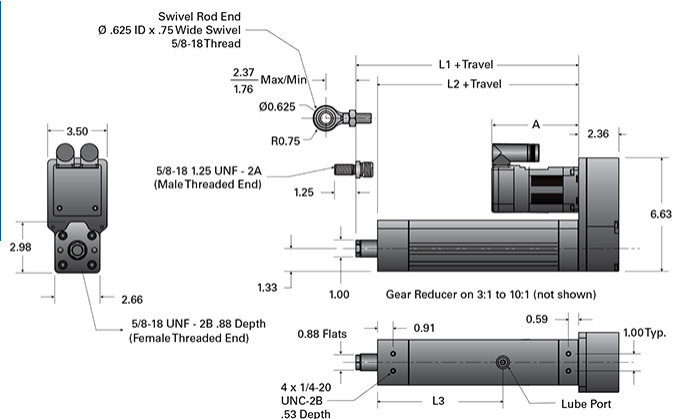


PA05-P 076-RA V

Call 800-321-7800 or visit us online at www.nookindustries.com to configure and order your PA05-P 076-RA V today!



Details

| | |
|-----------------|----------|
| Screw | 3/4-6 RA |
| Screw Lead [in] | 0.166 |

Performance Specifications

| | |
|---------------------------|--------|
| Lead Accuracy +/- [in/in] | 0.0036 |
| Efficiency [%] | 36 |
| Max Capacity [lb] | 1000 |

Dimensions

| | |
|----------------------------------|------|
| L1 + Travel [in] | 9.05 |
| L2 + Travel [in] | 7.78 |
| A (w/out Reducer, No Brake) [in] | 5.42 |
| A (w/out Reducer, Brake) [in] | 6.96 |
| A (w/Reducer, No Brake) [in] | 8.09 |
| A (w/Reducer, Brake) [in] | 9.62 |