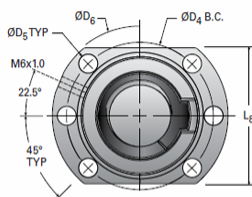
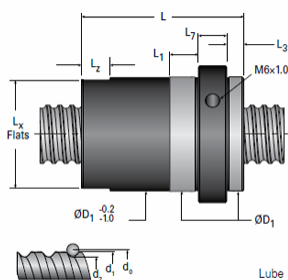


MBN25x10R-4FW

Call 800-321-7800 or visit us online at www.nookindustries.com to configure and order your MBN25x10R-4FW today!



Lube hole can be on either side of nut depending on size.
See table below for lube hole location.

Product Info

Nominal Rod Diameter [mm]	25
Material	Alloy
Thread Direction	RH

Details

Lead [mm]	10
Active Turns	4
Nominal Ball Dia. [mm]	3.000
Screw Weight [kg/m]	3.32
Nut Weight [kg]	0.38
Lube Hole Locaton	R
End Code for Types 1,2, and 3	20
End Code for Types 4	12
End Code for Types 5	20
End Code for Types 6	20
End Code for Types 7	20

Performance Specifications

Dynamic Load Ca [N]	13880
Static Load [N]	30940
Linear Speed (Based on DN Values) [mm/min]	28000

Screw Dimensions

d0 [mm]	25
d1 [mm]	23.98
d2 [mm]	21.90

Nut Dimensions

D1 (g6) [mm]	38
L [mm]	64
L1 [mm]	16
Lx [mm]	36
Lz [mm]	10
L3 (min) [mm]	-
L7 [mm]	12
L8 [mm]	48
D4 [mm]	51
D5 [mm]	6 × 6.6
D6 [mm]	62