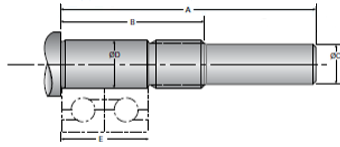


## Type 6L, End Code 30

Call 800-321-7800 or visit us online at [www.nookindustries.com](http://www.nookindustries.com) to configure and order your Type 6L, End Code 30 today!



### Product Info

Nominal Bearing Journal Size 30

### Dimensions

A [mm]	126.0
B [mm]	72.0
C Maximum [MM]	25.00
C Minimum [MM]	24.98
D Maximum [mm]	30.007
D Minimum [mm]	29.994
E [mm]	47.00
Lock Nut	M30 x 1.5