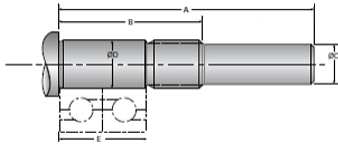


## Type 6L, End Code 25

Call 800-321-7800 or visit us online at [www.nookindustries.com](http://www.nookindustries.com) to configure and order your Type 6L, End Code 25 today!



### Product Info

Nominal Bearing Journal Size

25

### Dimensions

A [mm]	104.5
B [mm]	65.0
C Maximum [MM]	20.00
C Minimum [MM]	19.89
D Maximum [mm]	25.007
D Minimum [mm]	24.994
E [mm]	47.00
Lock Nut	M25 x 1.5