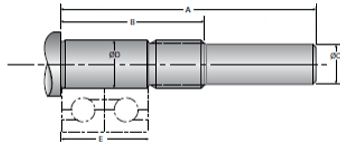


Type 6L, End Code 6

Call 800-321-7800 or visit us online at www.nookindustries.com to configure and order your Type 6L, End Code 6 today!



Product Info

Nominal Bearing Journal Size

6

Dimensions

A [mm]

38.0

B [mm]

28.0

C Maximum [MM]

4.00

C Minimum [MM]

3.98

D Maximum [mm]

6.005

D Minimum [mm]

5.996

E [mm]

20.00

Lock Nut

M6 x 0.75