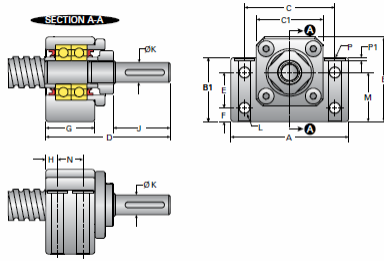


## EZBK15-SLB

Call 800-321-7800 or visit us online at [www.nookindustries.com](http://www.nookindustries.com) to configure and order your EZBK15-SLB today!



### Product Info

|                                   |            |
|-----------------------------------|------------|
| Part Number                       | EZBK15-SLB |
| Machined End Code                 | 15         |
| Nominal Bearing Journal Size [mm] | 15         |
| Max Load Limit [kN]               | 2.36       |

### Dimensions

|                       |      |
|-----------------------|------|
| A [mm]                | 70   |
| B [mm]                | 47   |
| B1 [mm]               | 38.0 |
| C [mm]                | 54   |
| C1 [mm]               | 38   |
| D [mm]                | 60.5 |
| E [mm]                | 18   |
| F [mm]                | 10   |
| G [mm]                | 27   |
| H [mm]                | 6    |
| J [mm]                | 20.5 |
| K Shaft Diameter [mm] | 12   |
| L Thru [mm]           | 5.5  |
| M [mm]                | 28   |
| N [mm]                | 15   |
| P C'Bore [mm]         | 10.5 |
| P P1 [mm]             | 6.5  |
| P - Bolt Size         | 6    |
| P-Thru [mm]           | 6.3  |