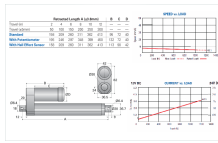
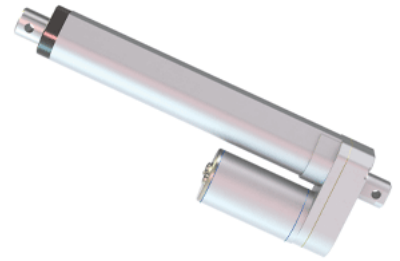


VMD3-24-40

Call 800-321-7800 or visit us online at www.nookindustries.com to configure and order your VMD3-24-40 today!



Product Info	
Screw Type	Acme Screw
Details	
Voltage [VDC]	24
Gear Ratio	40:1
Speed [mm/s]	5
Load Capacity Rated Load [N]	1000
Load Capacity Maximum Load [N]	1200
Amps	1.5
Performance Specifications	
Duty Cycle [% of 5 Minutes]	25
Rated Cycles At Full Load	5000
Protection Class	IP65