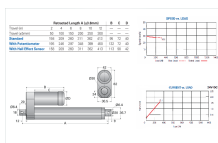
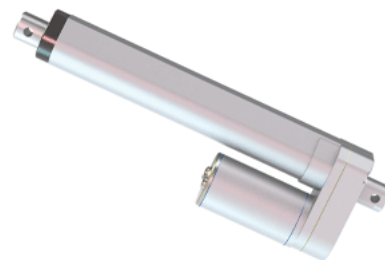


VMD3-24-10

Call 800-321-7800 or visit us online at www.nookindustries.com to configure and order your VMD3-24-10 today!



Product Info

Screw Type

Acme Screw

Details

Voltage [VDC]

24

Gear Ratio

10:1

Speed [mm/s]

28

Load Capacity Rated Load [N]

200

Load Capacity Maximum Load [N]

300

Amps

1.5

Performance Specifications

Duty Cycle [% of 5 Minutes]

25

Rated Cycles At Full Load

5000

Protection Class

IP65