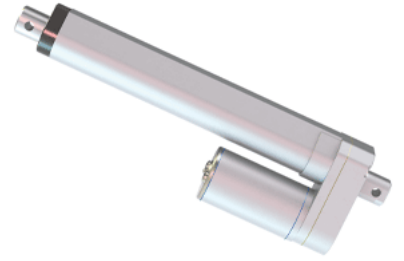
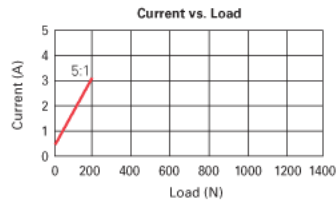
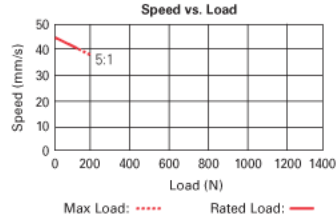
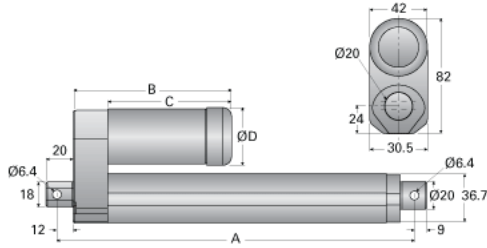


VMD3-24-5

Call 800-321-7800 or visit us online at www.nookindustries.com to configure and order your VMD3-24-5 today!



	Retracted Length A (± 3.8 mm)						B	C	D
Travel (in)	2	4	6	8	10	12	—	—	—
Travel (± 5 mm)	50	100	150	200	250	300	—	—	—
Standard	158	209	260	311	362	413	95	72	40
With Potentiometer	195	246	297	348	399	450	132	72	40
With Hall Effect Sensor	158	209	260	311	362	413	113	90	42



Product Info

Screw Type

Acme Screw

Details

Voltage [VDC]

24

Gear Ratio

5:1

Speed [mm/s]

40

Load Capacity Rated Load [N]

100

Load Capacity Maximum Load [N]

200

Amps

1.5

Performance Specifications

Duty Cycle [% of 5 Minutes]

25

Protection Class

IP65