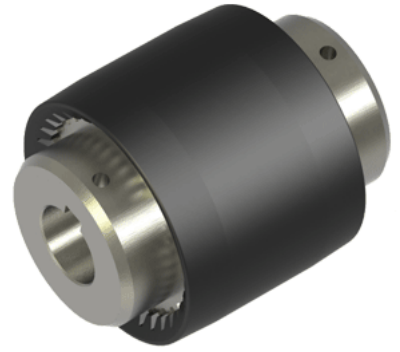
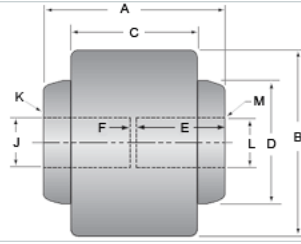


## Economy Full Flex 1/2 x 3/4

Call 800-321-7800 or visit us online at [www.nookindustries.com](http://www.nookindustries.com) to configure and order your Economy Full Flex 1/2 x 3/4 today!



### Product Info

Product Code

P-2200-185

### Dimension

|                 |             |
|-----------------|-------------|
| A [in]          | 2.13        |
| B [in]          | 1.89        |
| C [in]          | 1.46        |
| D [in]          | 1.26        |
| E [in]          | 0.98        |
| F [in]          | 0.16        |
| J [in]          | 0.5000      |
| K - Keyway [in] | 1/8 × 1/16  |
| L [in]          | 0.7500      |
| M - Keyway [in] | 3/16 × 3/32 |

### Performance Specifications

Maximum Torque Rating [in-lb] 210

### Weight

Weight [lb] 0.37