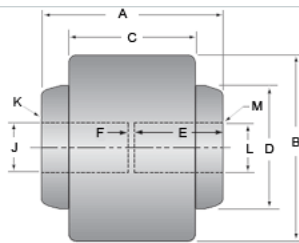


## Flex-Rigid 1/2 x 3/4

Call 800-321-7800 or visit us online at [www.nookindustries.com](http://www.nookindustries.com) to configure and order your Flex-Rigid 1/2 x 3/4 today!



### Product Info

Product Code

C-1805-04

### Dimension

A [in]	3.13
B [in]	3.31
C [in]	2.00
D [in]	2.00
E [in]	1.50
F [in]	0.13
J [in]	0.4995/0.4990
K - Keyway [in]	1/8 × 1/16
L [in]	0.7495/0.7490
M - Keyway [in]	3/16 × 3/32

### Performance Specifications

Maximum Torque Rating [in-lb] 2500

### Weight

Weight [lb] 5.00