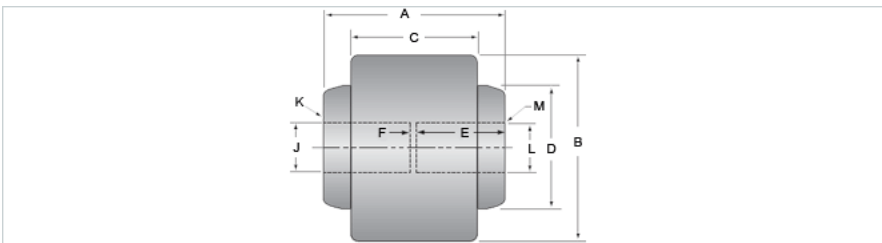


## Full Flex 1/2 x 1

Call 800-321-7800 or visit us online at [www.nookindustries.com](http://www.nookindustries.com) to configure and order your Full Flex 1/2 x 1 today!



Product Info	
Product Code	C-1800-01
Dimension	
A [in]	3.13
B [in]	3.31
C [in]	2.00
D [in]	2.00
E [in]	1.50
F [in]	0.13
J [in]	0.4995/0.4990
K - Keyway [in]	1/8 × 1/16
L [in]	0.9995/0.9990
M - Keyway [in]	1/4 × 1/8
Performance Specifications	
Maximum Torque Rating [in-lb]	2500
Weight	
Weight [lb]	5.00