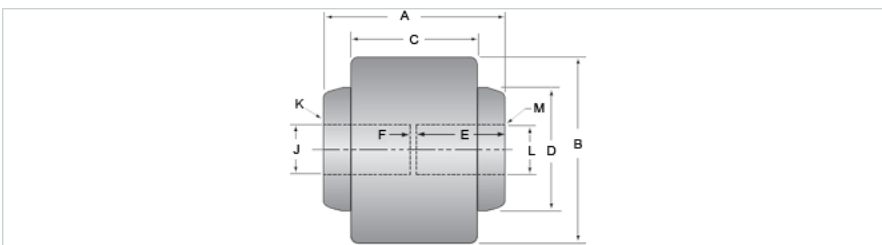


Full Flex 1/2 x 3/4

Call 800-321-7800 or visit us online at www.nookindustries.com to configure and order your Full Flex 1/2 x 3/4 today!



Product Info	
Product Code	C-1800-04
Dimension	
A [in]	3.13
B [in]	3.31
C [in]	2.00
D [in]	2.00
E [in]	1.50
F [in]	0.13
J [in]	0.4995/0.4990
K - Keyway [in]	1/8 × 1/16
L [in]	0.7495/0.7490
M - Keyway [in]	3/16 × 3/32
Performance Specifications	
Maximum Torque Rating [in-lb]	2500
Weight	
Weight [lb]	5.00