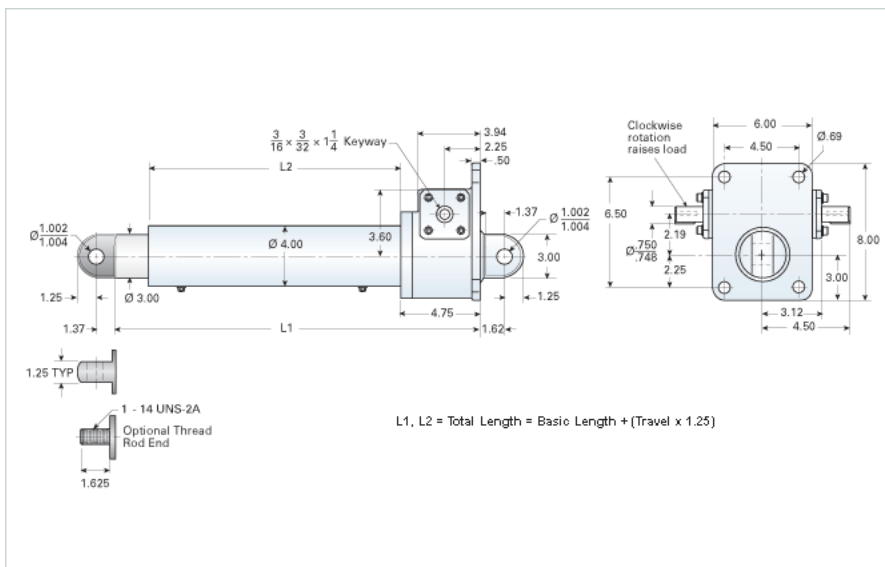


DD-506-SL

Call 800-321-7800 or visit us online at www.nookindustries.com to configure and order your DD-506-SL today!



Details

Gear Ratio	6:1
Max Capacity [lb]	10000
Input Turns Per Inch Of Travel	3.2
Torque To Raise 1 lb. [in-lb]	0.0726
Ball Screw	1500-1875 SRT RA
Screw Lead [in]	1.875
Root Diameter [in]	1.188
Max HP [hp]	3

Weight

Basic Weight [lb]	63
Per Inch of Travel [lb]	1.92

Tube Dimensions

L1 Basic Length [in]	15.56
L2 Basic Length [in]	9.56

NEMA 42 Dimensions

L3 [in]	-
E [in]	-
F [in]	-

NEMA 48 Dimensions

L3 [in]	-
E [in]	-
F [in]	-

NEMA 56C Dimensions

L3 [in]	7.25
E [in]	6.75
F [in]	3.75

NEMA 182TC Dimensions

L3 [in]	8.00
E [in]	9.25

NEMA 182TC/18TCc Dimensions

F [in]	3.75
--------	------

NEMA 184TC Dimensions

L3 [in]	-
E [in]	-
F [in]	-

NEMA 213TC Dimensions

L3 [in]	-
E [in]	-
F [in]	-