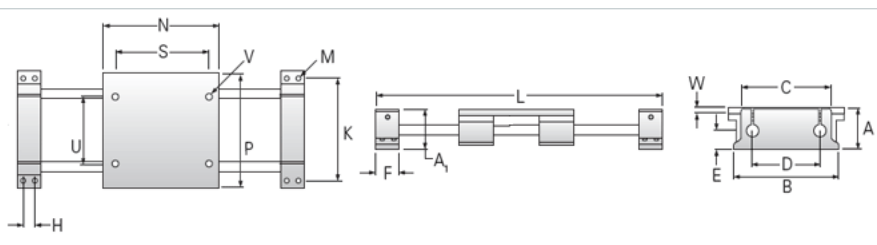
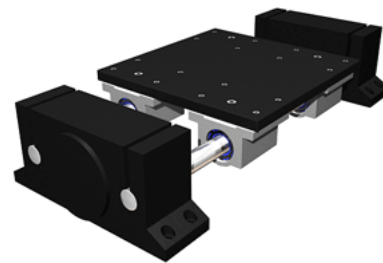


PowerTrax 211-08-LXX

Call 800-321-7800 or visit us online at www.nookindustries.com to configure and order your PowerTrax 211-08-LXX today!



Product Info

Nominal Shaft Diameter [in] 0.50

Dimensions

A +/-0.003 [in]	2.187
A1 [in]	2.38
B [in]	5.30
C [in]	4.25
D [in]	3.25
E [in]	1.13
F [in]	1.50
H +/-0.010 [in]	0.750
K +/-0.010 [in]	4.800
M - Bolt	#8
M - Hole [in]	0.19
N [in]	5.50
P [in]	5.50
S [in]	4.50
U [in]	3.25
V	1/4-20
W [in]	0.38
Minimum L Dimension TRAVEL + [in]	8.5

Performance specifications

Load Maximum System [lbf] 700