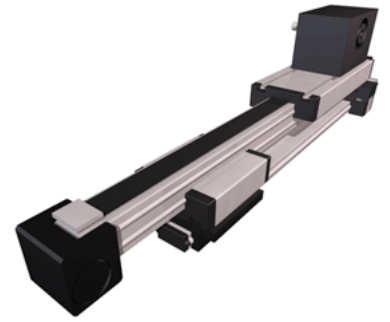
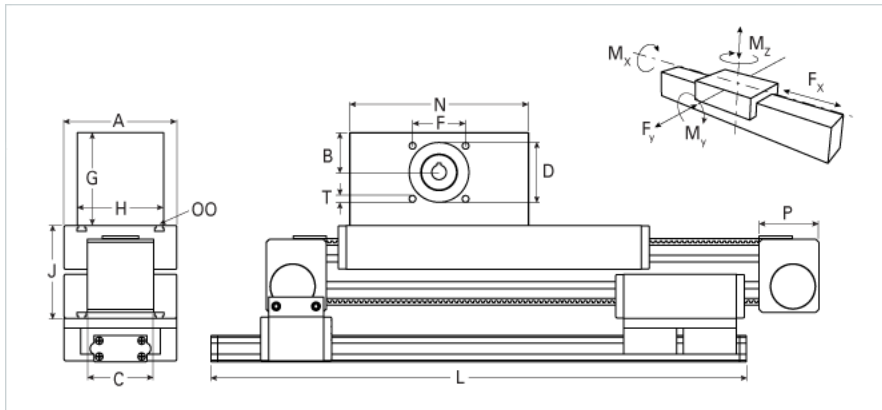


## ELZT 60S Extended Carriage Low Profile Extension

Call 800-321-7800 or visit us online at [www.nookindustries.com](http://www.nookindustries.com) to configure and order your ELZT 60S Extended Carriage Low Profile Extension today!



| Details  |         |
|--|---------|
| Size   | 60S     |
| Belt   | 8M30    |
| mm/Rev   | 192     |
| Number of Teeth                                    | 24      |
| Pully Diameter [mm]                                | 61.1    |
| Dimensions   |         |
| Basic Length L [mm]                                | 506     |
| A [mm]   | 170     |
| B [mm]   | 39      |
| C [mm]   | 80      |
| D [mm]   | 68      |
| F [mm]   | 60      |
| G [mm]   | 105     |
| H [mm]   | 100     |
| I [mm]   | -       |
| J [mm]   | 106     |
| MM   | -       |
| N [mm]   | 180     |
| OO   | M8      |
| P [mm]   | 59      |
| Q [mm]   | 379     |
| T  | M8      |
| V [mm]   | -       |
| Shaft Diameter and Length [mm]                     | 18 x 45 |
| Key  | 6x6x40  |
| Speed  |         |
| Speed Maximum [m/s]                                | 7       |
| Forces and Torques                                 |         |
| No-load torque [Nm]                                | 1.1     |
| Tensile force 0.2 sec [N]                          | 700     |
| Tensile force permanent [N]                        | 580     |
| Fy dynamic [N]                                     | 310     |
| Fx dynamic [N]                                     | 470     |
| Fz dynamic [N]                                     | 1600    |
| Mx dynamic [Nm]                                    | 65      |
| My dynamic [Nm]                                    | 140     |
| Mz dynamic [Nm]                                    | 170     |
| Fx static [N]                                      | 580     |
| Fy static [N]                                      | 4100    |
| Fz static [N]                                      | 2160    |
| Mx static [Nm]                                     | 88      |
| My static [Nm]                                     | 190     |
| Mz static [Nm]                                     | 230     |
| Geometrical moments of inertia of aluminum profile |         |
| Elastic modulus [N/mm <sup>2</sup> ]               | 70000   |
| Ix [mm <sup>4</sup> ]                              | 679000  |
| Iy [mm <sup>4</sup> ]                              | 697000  |
| Weight   |         |
| Additional Weight per 100 mm [kg]                  | 0.73    |
| Basic Weight [kg]                                  | 10.1    |