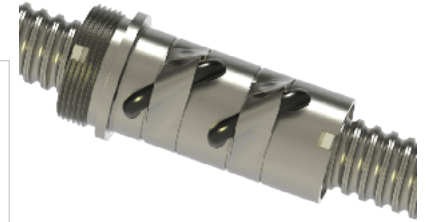
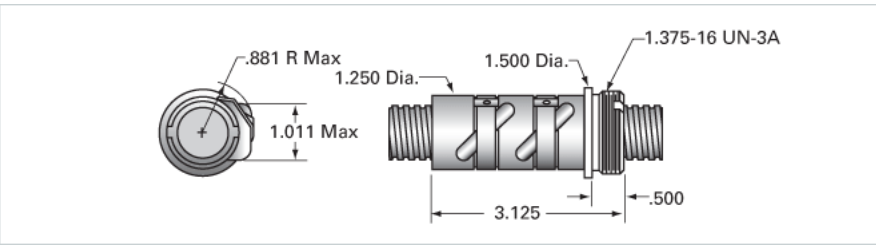


PowerTrac 0875 - 0200 XPR RA, with PRN Ball Nut, Preloaded

Call 800-321-7800 or visit us online at www.nookindustries.com to configure and order your PowerTrac 0875 - 0200 XPR RA, with PRN Ball Nut,



Inch Ball Screw	
(Screw)Product Info	
Screw Code	0875-0200 XPR RA
Precision	XPR
Screw Material	4150
Thread Direction	RH
(Screw)Details	
Ball Circle Diameter [in]	0.875
Lead [in]	0.200
Root Diameter [in]	0.735
End Code for Types 1,2,3,5 [* Journals may show tracings of the thread]	17
End Code for Type 4 [* Journals may show tracings of the thread]	10
(Screw)Performance Specifications	
Lead Accuracy +/- [in./ft.]	0.0010
(Screw)Part Numbers	
2 ft. Part Number	
4 ft. Part Number	XPR8720R48
6 ft. Part Number	
8 ft. Part Number	XPR8720R96
12 ft. Part Number	
16 ft. Part Number	
20 ft. Part Number	
(Screw)Weight	
Screw Weight [lb./ft.]	1.80
Inch Ball Nut, for SGT and XPR, Ground Accuracy, Preloaded, Fixed, PRN	
(Nut)Product Info	
Ball Nut Number	PRN10110
Thread Direction	RH
(Nut)Details	
Ball Circle Diameter [in]	0.875
Lead [in]	0.200
Nominal Ball Diameter [in]	0.125
Root diameter [in]	0.735
(Nut)Forces and Torques	
Torque to Raise 1 lb. [in-lb]	0.035
(Nut)Flange Part Numbers	
Flange Part Number	FLG8281
(Nut)Wiper Part Numbers	
Wiper Kit Part Number	ELASTOMER
(Nut)Weight	
Nut Weight [lb]	1.10
(Nut)Performance Specifications	
Maximum Adjustable Preload [lb]	
Spring Rate x 10 ⁶ [lb./in.]	3.10
Dynamic Load [lb]	1375
Static Load [lb]	10780