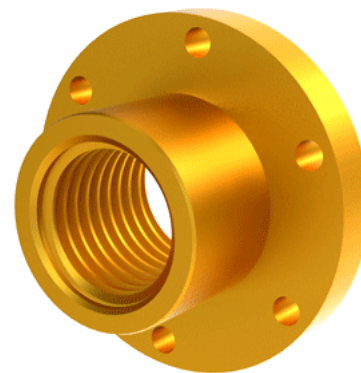
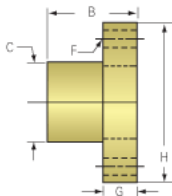


Bronze Acme Nut 6"-1 1/2 RH, with Integral Flange

Call 800-321-7800 or visit us online at www.nookindustries.com to configure and order your Bronze Acme Nut 6"-1 1/2 RH, with Integral Flange today!



Product Info

Part Number	6954-1
Thread Direction	RH
Type	Bronze

Details

Lead [in]	0.667
Starts	1
Pitch [in]	0.667
Turns Per Inch	1.5
Lash (Maximum Axial) [in]	0.025
Nominal Rod Diameter [in]	6.000
Threads per Inch	1.5
Thread Code	602
Form	2G

Dimensions

B [in]	7.00
C [in]	8.00
F (n) Dia. [in]	(6) 1.125
F BCD [in]	11.000
G [in]	2.02
H [in]	14.00

Forces and Torques

Torque to Raise 1 lb. [in-lb]	0.474
-------------------------------	-------

Flange Part Numbers

Flange No-Lash Part Number	n/a
Flange Part Number	n/a

Weight

Flange Weight [lb]	n/a
Nut Weight [lb]	n/a

Performance Specifications

Efficiency [%]	22
Lead Accuracy +/- [in/in]	0.0006
Dynamic Load Capacity [lb]	180000
Static Load Capacity [lb]	576000