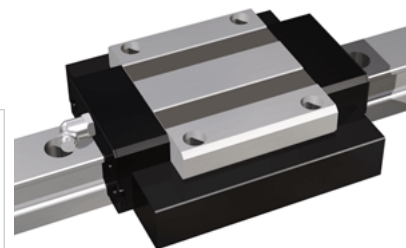
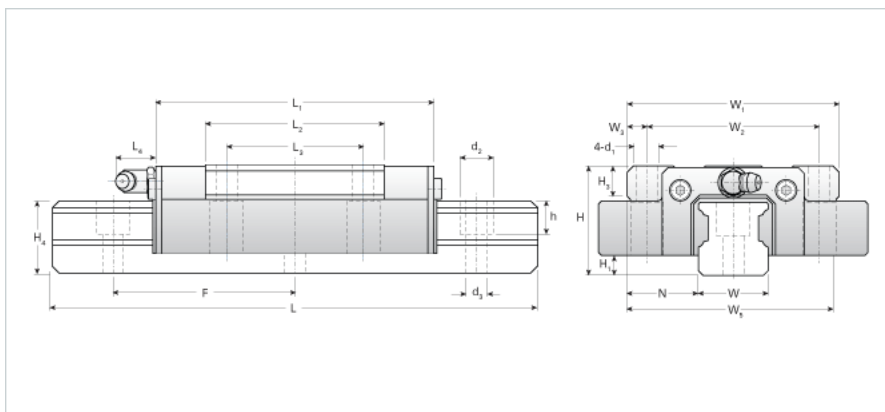


## NH65TB Assembly

Call 800-321-7800 or visit us online at [www.nookindustries.com](http://www.nookindustries.com) to configure and order your NH65TB Assembly today!



### Dimensions

H [mm]	85
H1 [mm]	14
N [mm]	53.5

### Metric Profile Rail

#### (Rail)Details

Size [mm]	65
Type	Standard

#### (Rail)Dimensions

d2 [mm]	26
d3 [mm]	18
h [mm]	25
H4 [mm]	58
F [mm]	150
W [mm]	63
Maximum Length [mm]	3000

#### (Rail)Weight

Weights-Rail [kg/m]	24.9
---------------------	------

### Metric Runner Block, Heavy Load, High Speed, 4 Through Holes On Flange

#### (Runner Block)Details

Size [mm]	65
-----------	----

#### (Runner Block)Dimensions

L1 [mm]	225
L2 [mm]	148
L3 [mm]	110
L4 [mm]	12
d1 x l	M16x29
H3 [mm]	20
W1 [mm]	170
W2 [mm]	142
W3 [mm]	14
W5 [mm]	207

#### (Runner Block)Forces and Torques

Basic Load Ratings C [kN]	141.11
Basic Load Ratings C [lbf]	31714
Basic Load Ratings C0 [kN]	215.15
Basic Load Ratings C0 [lbf]	48354
Static Moment Ratings-Ma [kN-m]	4.21
Static Moment Ratings-Ma [lb-in]	37237
Static Moment Ratings-Mb [kN-m]	4.21
Static Moment Ratings-Mb [lb-in]	37237
Static Moment Ratings-Mc [kN-m]	7.38
Static Moment Ratings-Mc [lb-in]	65360

#### (Runner Block)Weight

Weight-Block [kg]	8.40
-------------------	------

#### (Runner Block)Grease Fitting

Grease Fitting Part Number	B-PT-1/8
----------------------------	----------