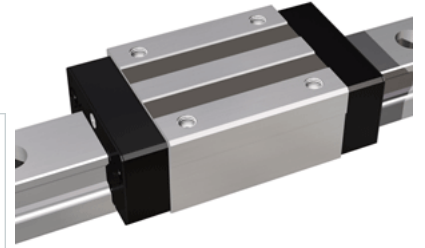
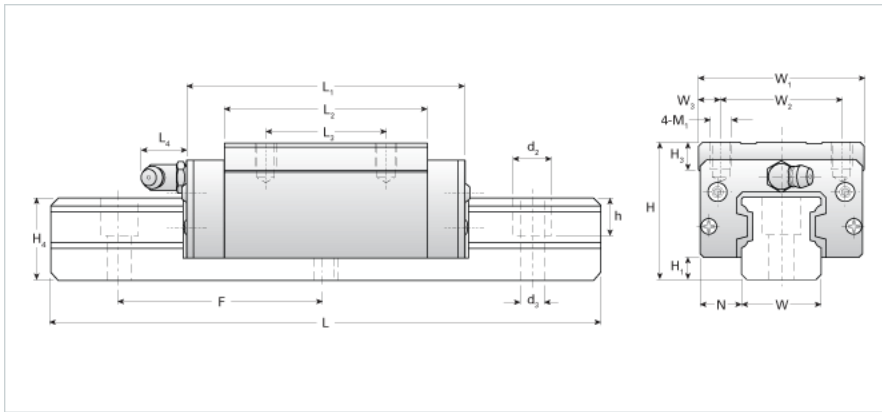


## NH55ER Assembly

Call 800-321-7800 or visit us online at [www.nookindustries.com](http://www.nookindustries.com) to configure and order your NH55ER Assembly today!



|  |          |
|--|----------|
| <b>Dimensions</b>  |          |
| H [mm]   | 80       |
| H1 [mm]  | 14       |
| N [mm]   | 23.5     |
| <b>Metric Profile Rail (Rail)Details</b>   |          |
| Size [mm]  | 55       |
| Type   | Standard |
| <b>(Rail)Dimensions</b>  |          |
| d2 [mm]  | 23       |
| d3 [mm]  | 16       |
| h [mm]   | 24       |
| H4 [mm]  | 48       |
| F [mm]   | 120      |
| W [mm]   | 53       |
| Maximum Length [mm]  | 3000     |
| <b>(Rail)Weight</b>  |          |
| Weights-Rail [kg/m]  | 16.5     |
| <b>Metric Runner Block, Heavy Load, Narrow Width, 4 Tapped Holes (Runner Block)Details</b> |          |
| Size [mm]  | 55       |
| <b>(Runner Block)Dimensions</b>  |          |
| L1 [mm]  | 168      |
| L2 [mm]  | 124      |
| L3 [mm]  | 75       |
| L4 [mm]  | 16       |
| M1 x l   | M12x18   |
| H3 [mm]  | 18       |
| W1 [mm]  | 100      |
| W2 [mm]  | 75       |
| W3 [mm]  | 12.5     |
| <b>(Runner Block)Forces and Torques</b>  |          |
| Basic Load Ratings C [kN]  | 90.02    |
| Basic Load Ratings C [lbf]   | 20232    |
| Basic Load Ratings C0 [kN]   | 137.09   |
| Basic Load Ratings C0 [lbf]  | 30811    |
| Static Moment Ratings-Ma [kN-m]  | 2.22     |
| Static Moment Ratings-Ma [lb-in]   | 19617    |
| Static Moment Ratings-Mb [kN-m]  | 2.22     |
| Static Moment Ratings-Mb [lb-in]   | 19617    |
| Static Moment Ratings-Mc [kN-m]  | 4.25     |
| Static Moment Ratings-Mc [lb-in]   | 37671    |
| <b>(Runner Block)Weight</b>  |          |
| Weight-Block [kg]  | 4.50     |
| <b>(Runner Block)Grease Fitting</b>  |          |
| Grease Fitting Part Number   | B-PT 1/8 |