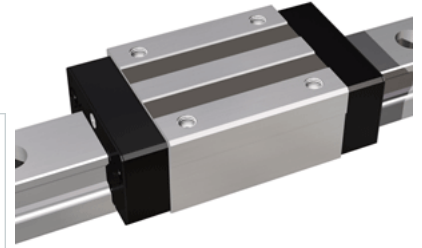
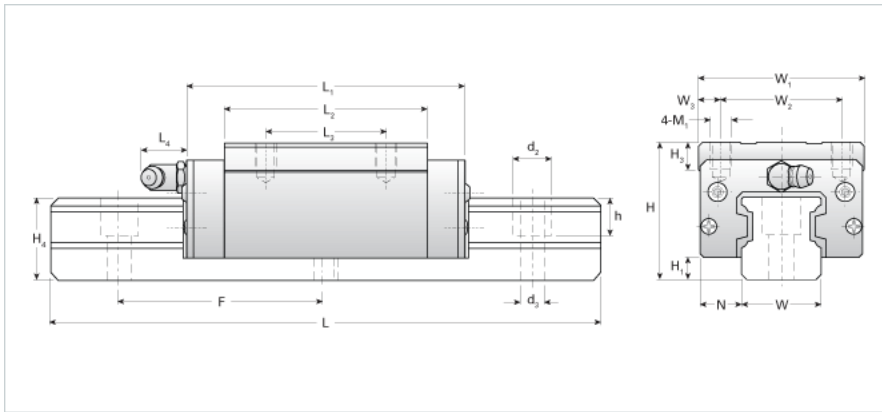


## NH45ER Assembly

Call 800-321-7800 or visit us online at [www.nookindustries.com](http://www.nookindustries.com) to configure and order your NH45ER Assembly today!



|  |          |
|--|----------|
| <b>Dimensions</b>  |          |
| H [mm]   | 70       |
| H1 [mm]  | 11       |
| N [mm]   | 20.5     |
| <b>Metric Profile Rail (Rail)Details</b>   |          |
| Size [mm]  | 45       |
| Type   | Standard |
| <b>(Rail)Dimensions</b>  |          |
| d2 [mm]  | 20       |
| d3 [mm]  | 14       |
| h [mm]   | 21       |
| H4 [mm]  | 42       |
| F [mm]   | 105      |
| W [mm]   | 45       |
| Maximum Length [mm]  | 3000     |
| <b>(Rail)Weight</b>  |          |
| Weights-Rail [kg/m]  | 12.9     |
| <b>Metric Runner Block, Heavy Load, Narrow Width, 4 Tapped Holes (Runner Block)Details</b> |          |
| Size [mm]  | 45       |
| <b>(Runner Block)Dimensions</b>  |          |
| L1 [mm]  | 139      |
| L2 [mm]  | 102      |
| L3 [mm]  | 60       |
| L4 [mm]  | 16       |
| M1 x l   | M10x17   |
| H3 [mm]  | 15       |
| W1 [mm]  | 86       |
| W2 [mm]  | 60       |
| W3 [mm]  | 13       |
| <b>(Runner Block)Forces and Torques</b>  |          |
| Basic Load Ratings C [kN]  | 60.20    |
| Basic Load Ratings C [lbf]   | 13532    |
| Basic Load Ratings C0 [kN]   | 95.71    |
| Basic Load Ratings C0 [lbf]  | 21510    |
| Static Moment Ratings-Ma [kN-m]  | 1.30     |
| Static Moment Ratings-Ma [lb-in]   | 11544    |
| Static Moment Ratings-Mb [kN-m]  | 1.30     |
| Static Moment Ratings-Mb [lb-in]   | 11544    |
| Static Moment Ratings-Mc [kN-m]  | 2.30     |
| Static Moment Ratings-Mc [lb-in]   | 20398    |
| <b>(Runner Block)Weight</b>  |          |
| Weight-Block [kg]  | 2.90     |
| <b>(Runner Block)Grease Fitting</b>  |          |
| Grease Fitting Part Number   | B-PT 1/8 |