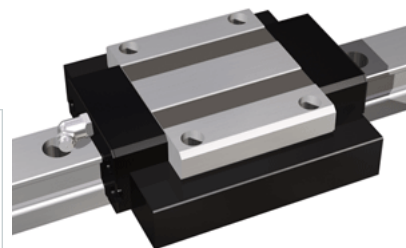
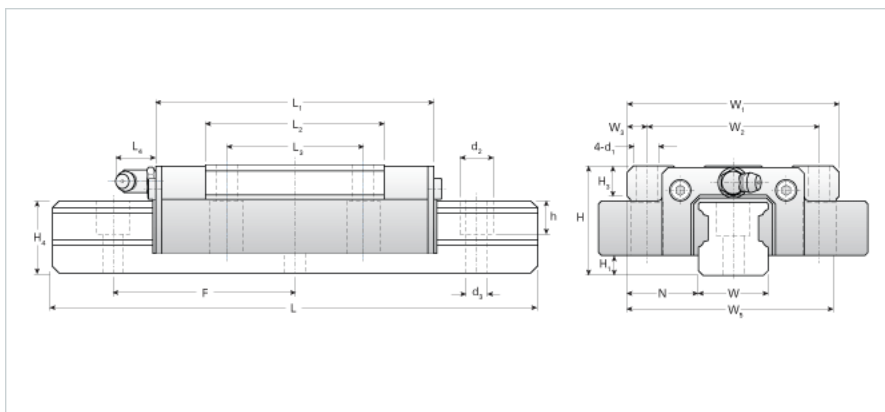


NH35TB Assembly

Call 800-321-7800 or visit us online at www.nookindustries.com to configure and order your NH35TB Assembly today!



Dimensions

H [mm]	48
H1 [mm]	8
N [mm]	33.0

Metric Profile Rail

(Rail)Details

Size [mm]	35
Type	Standard

(Rail)Dimensions

d2 [mm]	14
d3 [mm]	9
h [mm]	15
H4 [mm]	32
F [mm]	80
W [mm]	34
Maximum Length [mm]	4000

(Rail)Weight

Weights-Rail [kg/m]	7.5
---------------------	-----

Metric Runner Block, Heavy Load, High Speed, 4 Through Holes On Flange

(Runner Block)Details

Size [mm]	35
-----------	----

(Runner Block)Dimensions

L1 [mm]	128
L2 [mm]	80
L3 [mm]	62
L4 [mm]	10
d1 x l	M9x16
H3 [mm]	13
W1 [mm]	100
W2 [mm]	82
W3 [mm]	9
W5 [mm]	123

(Runner Block)Forces and Torques

Basic Load Ratings C [kN]	37.55
Basic Load Ratings C [lbf]	8441
Basic Load Ratings C0 [kN]	62.55
Basic Load Ratings C0 [lbf]	14061
Static Moment Ratings-Ma [kN-m]	0.64
Static Moment Ratings-Ma [lb-in]	5642
Static Moment Ratings-Mb [kN-m]	0.64
Static Moment Ratings-Mb [lb-in]	5642
Static Moment Ratings-Mc [kN-m]	1.13
Static Moment Ratings-Mc [lb-in]	9982

(Runner Block)Weight

Weight-Block [kg]	1.50
-------------------	------

(Runner Block)Grease Fitting

Grease Fitting Part Number	B-M6F
----------------------------	-------