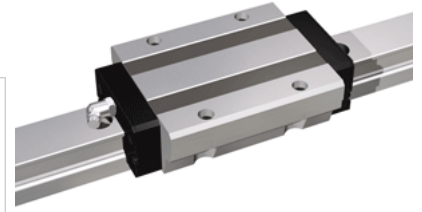
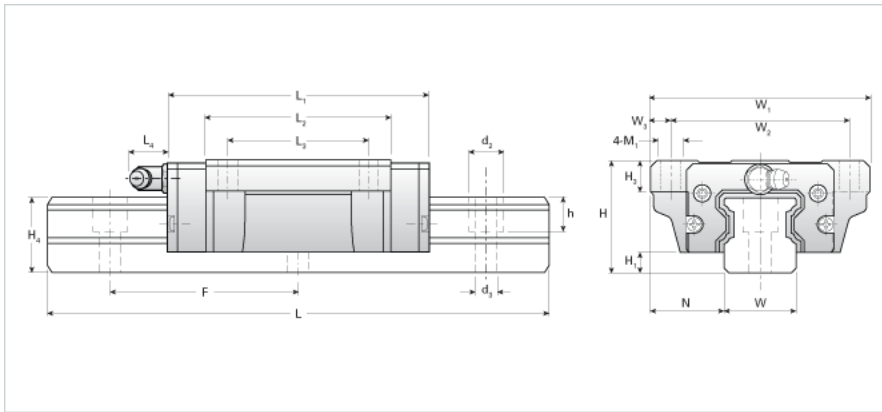


NH30LEB Assembly

Call 800-321-7800 or visit us online at www.nookindustries.com to configure and order your NH30LEB Assembly today!



| | |
|---|----------|
| Dimensions | |
| H [mm] | 42 |
| H1 [mm] | 7 |
| N [mm] | 31.0 |
| Metric Profile Rail (Rail)Details | |
| Size [mm] | 30 |
| Type | Standard |
| (Rail)Dimensions | |
| d2 [mm] | 14 |
| d3 [mm] | 9 |
| h [mm] | 14 |
| H4 [mm] | 28 |
| F [mm] | 80 |
| W [mm] | 28 |
| Maximum Length [mm] | 4000 |
| (Rail)Weight | |
| Weights-Rail [kg/m] | 5.3 |
| Metric Runner Block, Ultra Heavy Load, 4 Through Holes (Runner Block)Details | |
| Size [mm] | 30 |
| (Runner Block)Dimensions | |
| L1 [mm] | 123 |
| L2 [mm] | 94 |
| L3 [mm] | 52 |
| L4 [mm] | 12 |
| H3 [mm] | 13 |
| W1 [mm] | 90 |
| W2 [mm] | 72 |
| W3 [mm] | 9 |
| M1 [mm] | 9 |
| (Runner Block)Forces and Torques | |
| Basic Load Ratings C [kN] | 37.55 |
| Basic Load Ratings C [lbf] | 8441 |
| Basic Load Ratings C0 [kN] | 62.56 |
| Basic Load Ratings C0 [lbf] | 14061 |
| Static Moment Ratings-Ma [kN-m] | 0.73 |
| Static Moment Ratings-Ma [lb-in] | 6423 |
| Static Moment Ratings-Mb [kN-m] | 0.73 |
| Static Moment Ratings-Mb [lb-in] | 6423 |
| Static Moment Ratings-Mc [kN-m] | 0.98 |
| Static Moment Ratings-Mc [lb-in] | 8680 |
| (Runner Block)Weight | |
| Weight-Block [kg] | 1.80 |
| (Runner Block)Grease Fitting | |
| Grease Fitting Part Number | B-M6F |