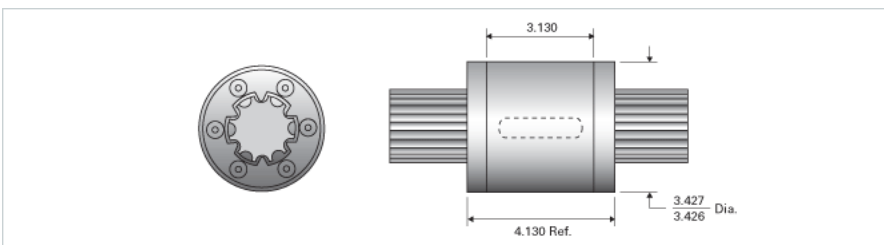
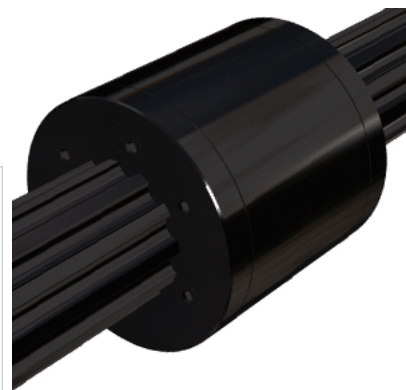


PowerTorq 2000-6-0312 HPR8946

Call 800-321-7800 or visit us online at www.nookindustries.com to configure and order your PowerTorq 2000-6-0312 HPR8946 today!



Inch Ball Spline Inner Race	
(Inch Ball Spline Inner Race(1))Product Info	
Nominal Diameter [in]	2.000
(Inch Ball Spline Inner Race(1))Details	
Active Circuits	6
Root Diameter [in]	1.67
(Inch Ball Spline Inner Race(1))Part Numbers	
12 ft. Part Number	SRR6436
2 ft. Part Number	
4 ft. Part Number	SRR6420
6 ft. Part Number	
8 ft. Part Number	SRR6428
(Inch Ball Spline Inner Race(1))Weight	
Inner Race Weight [lb./ft.]	9.9
Inch High Performance Ball Spline Outer Race	
(Inch High Performance Ball Spline Outer Race(2))Product Info	
Part Number	HPR8946
Nominal Diameter [in]	2.000
(Inch High Performance Ball Spline Outer Race(2))Details	
Active Circuits	6
Nominal Ball Diameter [in]	0.313
Optional Keyway	1/2x7/32x2.50
Ball Return	Cast
Balls per Outer Race	144
(Inch High Performance Ball Spline Outer Race(2))Weight	
Outer Race Weight [lb]	4.48
(Inch High Performance Ball Spline Outer Race(2))Performance Specifications	
Dynamic Torque [in-lb]	16000
Static Torque [in-lb]	40270