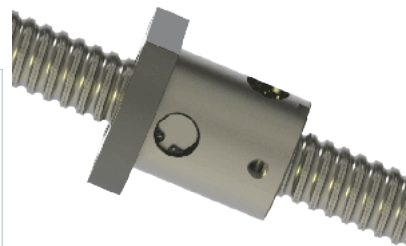
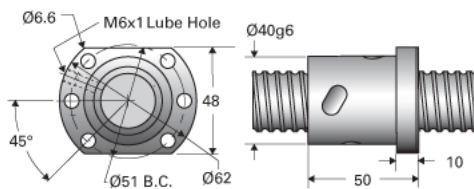


## PowerTrac PMT 25 x 5 RH with MPN Ball Nut

Call 800-321-7800 or visit us online at [www.nookindustries.com](http://www.nookindustries.com) to configure and order your PowerTrac PMT 25 x 5 RH with MPN Ball Nut today!



### Metric Ball Screw

#### (Screw)Product Info

Screw Code	25x5 PMT RA
Precision	PMT
Screw Material	4150
Thread Direction	RH

#### (Screw)Details

Screw Part Number	25x5 PMT
Ball Circle Diameter [mm]	25.75
Lead [mm]	5
Root Diameter [mm]	22.60
End Code for Types 1,2,3,5 [* Journals may show tracings of the thread]	20
End Code for Type 4 [* Journals may show tracings of the thread]	12

#### (Screw)Weight

Screw Weight [g/M]	3452
--------------------	------

#### (Screw)Performance Specifications

Lead Accuracy +/- [#956;m/300mm]	25
----------------------------------	----

### Metric Ball Nut, for PMT, Preloaded, Precision Accuracy, MPN

#### (Nut)Product Info

Ball Nut Number	MPN10333
Thread Direction	RH

#### (Nut)Details

Ball Circle Diameter [mm]	25.75
Lead [mm]	5
Nominal Ball Diameter [mm]	3.18
Root Diameter [mm]	22.60

#### (Nut)Forces and Torques

Torque to Raise 1 kN [Nm]	0.88
---------------------------	------

#### (Nut)Flange Part Numbers

Flange Part Number	INTEGRAL
--------------------	----------

#### (Nut)Wiper Part Numbers

Wiper Kit Part Number	ELASTOMER
-----------------------	-----------

#### (Nut)Weight

Nut Weight [g]	340
----------------	-----

#### (Nut)Performance Specifications

Lead Accuracy +/- [#956;m/300mm]	25
Spring Rate x 10 <sup>6</sup> [lb./in.]	0.35
Dynamic Load Ca [kN]	8.4
Static Load Coa [kN]	15.7