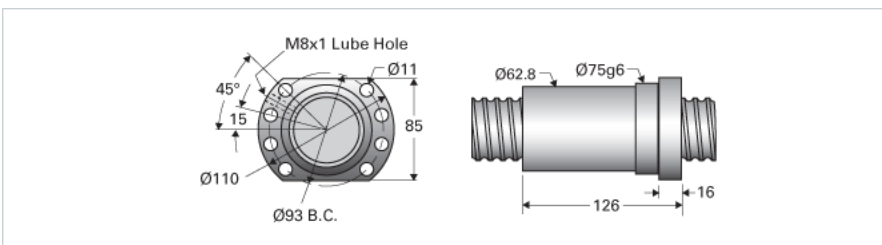
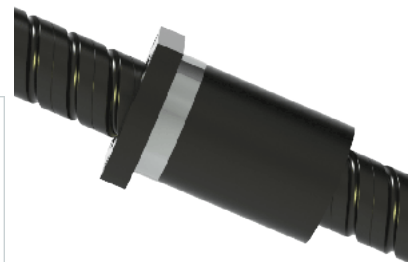


## PowerTrac MRT 50 x 50 RH with MBN Ball Nut

Call 800-321-7800 or visit us online at [www.nookindustries.com](http://www.nookindustries.com) to configure and order your PowerTrac MRT 50 x 50 RH with MBN Ball Nut today!



### Metric Ball Screw

#### (Screw)Product Info

Screw Code	50x50 MRT RA
Precision	MRT
Screw Material	4150
Thread Direction	RH

#### (Screw)Details

Screw Part Number	50x50 MRT
Ball Circle Diameter [mm]	49.5
Lead [mm]	50
Root Diameter [mm]	43.02
End Code for Types 1,2,3,5 [* Journals may show tracings of the thread]	40
End Code for Type 4 [* Journals may show tracings of the thread]	24

#### (Screw)Weight

Screw Weight [g/m]	13900
--------------------	-------

#### (Screw)Performance Specifications

Lead Accuracy +/- [ $\pm 956$ ;m/300mm]	100
---	-----

### Metric Ball Nut, for MRT, No Preload, Standard Accuracy, MBN

#### (Nut)Product Info

Ball Nut Number	MPN10432
Thread Direction	RH

#### (Nut)Details

Ball Circle Diameter [mm]	49.5
Lead [mm]	50
Nominal Ball Diameter [mm]	6.35
Root Diameter [mm]	43.02

#### (Nut)Forces and Torques

Torque to Raise 1 kN [Nm]	7.08
---------------------------	------

#### (Nut)Flange Part Numbers

Flange Part Number	INTEGRAL
--------------------	----------

#### (Nut)Wiper Part Numbers

Wiper Kit Part Number	PLASTIC
-----------------------	---------

#### (Nut)Weight

Nut Weight [g]	2950
----------------	------

#### (Nut)Performance Specifications

Lead Accuracy +/- [ $\pm 956$ ;m/300mm]	100
Dynamic Load Ca [kN]	92.6
Static Load Coa [kN]	152.4