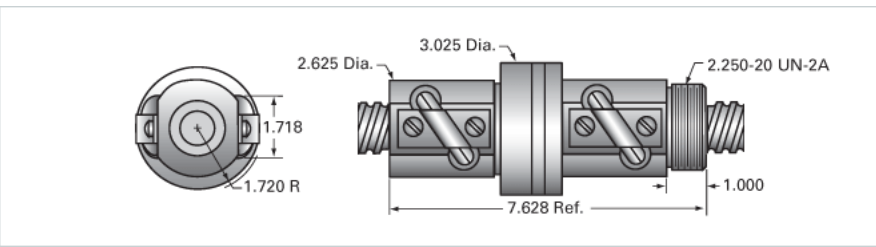


PowerTrac 1500 - 1000 SRT LA, with SEL Ball Nut, Adjustable

Call 800-321-7800 or visit us online at www.nookindustries.com to configure and order your PowerTrac 1500 - 1000 SRT LA, with SEL Ball Nut,



Inch Ball Screw	
(Screw)Product Info	
Screw Code	1500-1000 SRT LA
Precision	SRT
Screw Material	4150
Thread Direction	LH
(Screw)Details	
Ball Circle Diameter [in]	1.500
Lead [in]	1.000
Root Diameter [in]	1.140
End Code for Types 1,2,3,5 [* Journals may show tracings of the thread]	25
End Code for Type 4 [* Journals may show tracings of the thread]	16
(Screw)Performance Specifications	
Lead Accuracy +/- [in./ft.]	0.0040
(Screw)Part Numbers	
2 ft. Part Number	
4 ft. Part Number	SRT1991
6 ft. Part Number	
8 ft. Part Number	SRT1992
12 ft. Part Number	SRT2203
16 ft. Part Number	SRT0437
20 ft. Part Number	SRT0615
(Screw)Weight	
Screw Weight [lb./ft.]	4.47
Inch Ball Nut, for SRT, Standard Accuracy, Preloaded, Adjustable, SEL	
(Nut)Product Info	
Ball Nut Number	SEL0697
Thread Direction	LH
(Nut)Details	
Ball Circle Diameter [in]	1.500
Lead [in]	1.000
Nominal Ball Diameter [in]	0.344
Root diameter [in]	1.140
(Nut)Forces and Torques	
Torque to Raise 1 lb. [in-lb]	0.177
(Nut)Flange Part Numbers	
Flange Part Number	FLG7777
(Nut)Wiper Part Numbers	
Wiper Kit Part Number	WKB2657
(Nut)Weight	
Nut Weight [lb]	9.10
(Nut)Performance Specifications	
Lead Accuracy +/- [in./ft.]	0.004
Maximum Adjustable Preload [lb]	1650
Spring Rate x 10 ⁶ [lb./in.]	
Dynamic Load [lb]	7560
Static Load [lb]	34662