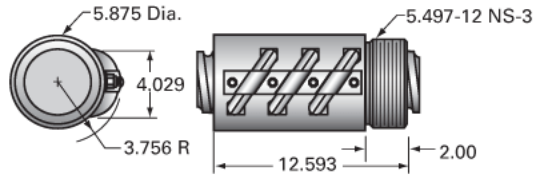


PowerTrac 4000 - 1000 SRT RA, with SBN Ball Nut, Triple Circuit

Call 800-321-7800 or visit us online at www.nookindustries.com to configure and order your PowerTrac 4000 - 1000 SRT RA, with SBN Ball Nut, Triple



Inch Ball Screw	
(Screw)Product Info	
Screw Code	4000-1000 SRT RA
Precision	SRT
Screw Material	4150
Thread Direction	RH
(Screw)Details	
Ball Circle Diameter [in]	4.000
Lead [in]	1.000
Root Diameter [in]	3.338
End Code for Types 1,2,3,5 [* Journals may show tracings of the thread]	80
End Code for Type 4 [* Journals may show tracings of the thread]	48
(Screw)Performance Specifications	
Lead Accuracy +/- [in./ft.]	0.0080
(Screw)Part Numbers	
2 ft. Part Number	
4 ft. Part Number	SRT3259
6 ft. Part Number	
8 ft. Part Number	SRT3260
12 ft. Part Number	SRT3261
16 ft. Part Number	SRT0624
20 ft. Part Number	SRT3262
(Screw)Weight	
Screw Weight [lb./ft.]	34.40
Inch Ball Nut, for SRT, Standard Accuracy, No Preload, SBN, Standard	
(Nut)Product Info	
Ball Nut Number	SBN3258
Thread Direction	RH
(Nut)Details	
Ball Circle Diameter [in]	4.000
Lead [in]	1.000
Nominal Ball Diameter [in]	0.625
Root diameter [in]	3.338
(Nut)Dimensions	
A [in]	
(Nut)Forces and Torques	
Torque to Raise 1 lb. [in-lb]	0.177
(Nut)Flange Part Numbers	
Flange Part Number	FLG3307
(Nut)Wiper Part Numbers	
Wiper Kit Part Number	WKB3306
Wiper Kit Felt Part Number	WKF4057
(Nut)Weight	
Nut Weight [lb]	53.50
(Nut)Performance Specifications	
Lead Accuracy +/- [in./ft.]	0.008
Maximum Adjustable Preload [lb]	
Spring Rate x 10 ⁶ [lb./in.]	
Dynamic Load [lb]	85758
Static Load [lb]	476970