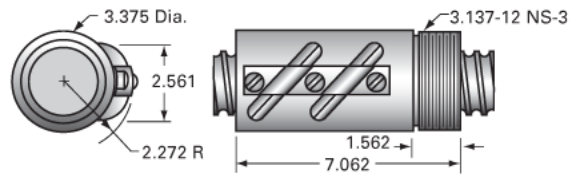


PowerTrac 2250 - 0500 SRT RA, with SBN Ball Nut, Double Circuit,

Call 800-321-7800 or visit us online at www.nookindustries.com to configure and order your PowerTrac 2250 - 0500 SRT RA, with SBN Ball Nut, Double



Inch Ball Screw	
(Screw)Product Info	
Screw Code	2250-0500 SRT RA
Precision	SRT
Screw Material	4150
Thread Direction	RH
(Screw)Details	
Ball Circle Diameter [in]	2.250
Lead [in]	0.500
Root Diameter [in]	1.850
End Code for Types 1,2,3,5 [* Journals may show tracings of the thread]	45
End Code for Type 4 [* Journals may show tracings of the thread]	28
(Screw)Performance Specifications	
Lead Accuracy +/- [in./ft.]	0.0040
(Screw)Part Numbers	
2 ft. Part Number	
4 ft. Part Number	SRT5051
6 ft. Part Number	
8 ft. Part Number	SRT5059
12 ft. Part Number	SRT5067
16 ft. Part Number	SRT0439
20 ft. Part Number	SRT0600
(Screw)Weight	
Screw Weight [lb./ft.]	10.90
Inch Ball Nut, for SRT, Standard Accuracy, No Preload, SBN, Standard	
(Nut)Product Info	
Ball Nut Number	SBN10629
Thread Direction	RH
(Nut)Details	
Ball Circle Diameter [in]	2.250
Lead [in]	0.500
Nominal Ball Diameter [in]	0.375
Root diameter [in]	1.850
(Nut)Dimensions	
A [in]	7.062
(Nut)Forces and Torques	
Torque to Raise 1 lb. [in-lb]	0.088
(Nut)Flange Part Numbers	
Flange Part Number	FLG7574
(Nut)Wiper Part Numbers	
Wiper Kit Part Number	WKF3890
Wiper Kit Felt Part Number	
(Nut)Weight	
Nut Weight [lb]	9.00
(Nut)Performance Specifications	
Lead Accuracy +/- [in./ft.]	0.004
Maximum Adjustable Preload [lb]	
Spring Rate x 10 ⁶ [lb./in.]	
Dynamic Load [lb]	21306
Static Load [lb]	142660