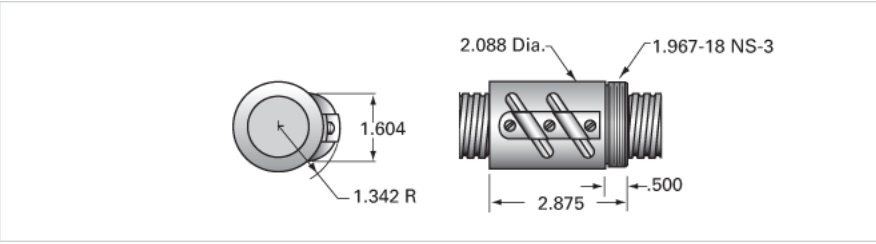


PowerTrac 1500 - 0250 SRT LA, with SBN Ball Nut, Double Circuit

Call 800-321-7800 or visit us online at www.nookindustries.com to configure and order your PowerTrac 1500 - 0250 SRT LA, with SBN Ball Nut, Double



| | |
|---|------------------|
| Inch Ball Screw | |
| (Screw)Product Info | |
| Screw Code | 1500-0250 SRT LA |
| Precision | SRT |
| Screw Material | 4150 |
| Thread Direction | LH |
| (Screw)Details | |
| Ball Circle Diameter [in] | 1.500 |
| Lead [in] | 0.250 |
| Root Diameter [in] | 1.320 |
| End Code for Types 1,2,3,5 [* Journals may show tracings of the thread] | 30 |
| End Code for Type 4 [* Journals may show tracings of the thread] | 19 |
| (Screw)Performance Specifications | |
| Lead Accuracy +/- [in./ft.] | 0.0040 |
| (Screw)Part Numbers | |
| 2 ft. Part Number | |
| 4 ft. Part Number | SRT3252 |
| 6 ft. Part Number | |
| 8 ft. Part Number | SRT3253 |
| 12 ft. Part Number | SRT3254 |
| 16 ft. Part Number | SRT0434 |
| 20 ft. Part Number | SRT0596 |
| (Screw)Weight | |
| Screw Weight [lb./ft.] | 5.16 |
| Inch Ball Nut, for SRT, Standard Accuracy, No Preload, SBN, Standard | |
| (Nut)Product Info | |
| Ball Nut Number | SBN1990 |
| Thread Direction | LH |
| (Nut)Details | |
| Ball Circle Diameter [in] | 1.500 |
| Lead [in] | 0.250 |
| Nominal Ball Diameter [in] | 0.156 |
| Root diameter [in] | 1.320 |
| (Nut)Dimensions | |
| A [in] | |
| (Nut)Forces and Torques | |
| Torque to Raise 1 lb. [in-lb] | 0.044 |
| (Nut)Flange Part Numbers | |
| Flange Part Number | FLG6754 |
| (Nut)Wiper Part Numbers | |
| Wiper Kit Part Number | WKB2654 |
| Wiper Kit Felt Part Number | |
| (Nut)Weight | |
| Nut Weight [lb] | 1.70 |
| (Nut)Performance Specifications | |
| Lead Accuracy +/- [in./ft.] | 0.004 |
| Maximum Adjustable Preload [lb] | |
| Spring Rate x 10 ⁶ [lb./in.] | |
| Dynamic Load [lb] | 4198 |
| Static Load [lb] | 44030 |