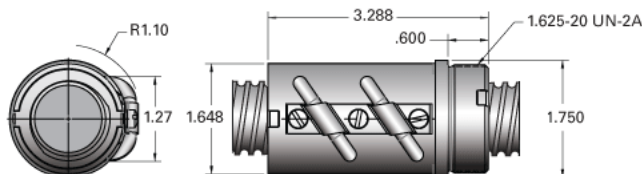


## PowerTrac 1250 - 0200 SRT LA, with SBN Ball Nut, Double Circuit

Call 800-321-7800 or visit us online at [www.nookindustries.com](http://www.nookindustries.com) to configure and order your PowerTrac 1250 - 0200 SRT LA, with SBN Ball Nut, Double



### Inch Ball Screw

#### (Screw)Product Info

Screw Code	1250-0200 SRT LA
Precision	SRT
Screw Material	4150
Thread Direction	LH

#### (Screw)Details

Ball Circle Diameter [in]	1.250
Lead [in]	0.200
Root Diameter [in]	1.115
End Code for Types 1,2,3,5 [* Journals may show tracings of the thread]	25
End Code for Type 4 [* Journals may show tracings of the thread]	16

#### (Screw)Performance Specifications

Lead Accuracy +/- [in./ft.]	0.0040
-----------------------------	--------

#### (Screw)Part Numbers

2 ft. Part Number	
4 ft. Part Number	SRT1223
6 ft. Part Number	
8 ft. Part Number	SRT1227
12 ft. Part Number	SRT1221
16 ft. Part Number	SRT1225
20 ft. Part Number	

#### (Screw)Weight

Screw Weight [lb./ft.]	3.70
------------------------	------

### Inch Ball Nut, for SRT, Standard Accuracy, No Preload, SBN, Standard

#### (Nut)Product Info

Ball Nut Number	SBN10189
Thread Direction	LH

#### (Nut)Details

Ball Circle Diameter [in]	1.250
Lead [in]	0.200
Nominal Ball Diameter [in]	0.125
Root diameter [in]	1.115

#### (Nut)Dimensions

A [in]	
--------	--

#### (Nut)Forces and Torques

Torque to Raise 1 lb. [in-lb]	0.035
-------------------------------	-------

#### (Nut)Flange Part Numbers

Flange Part Number	FLG8283
--------------------	---------

#### (Nut)Wiper Part Numbers

Wiper Kit Part Number	ELASTOMER
Wiper Kit Felt Part Number	

#### (Nut)Weight

Nut Weight [lb]	1.80
-----------------	------

#### (Nut)Performance Specifications

Lead Accuracy +/- [in./ft.]	0.004
Maximum Adjustable Preload [lb]	
Spring Rate x 10 <sup>6</sup> [lb./in.]	
Dynamic Load [lb]	3336
Static Load [lb]	34688