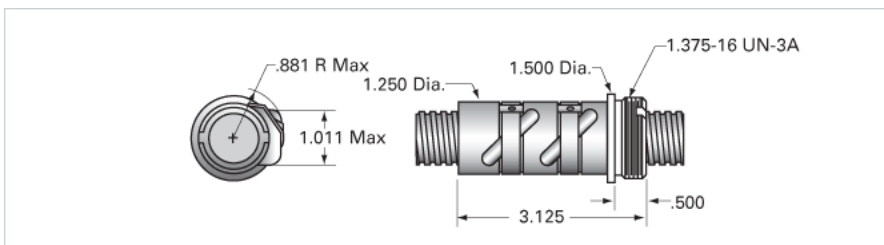


## PowerTrac 0875 - 0200 SGT RA, with PRN Ball Nut, Preloaded

Call 800-321-7800 or visit us online at [www.nookindustries.com](http://www.nookindustries.com) to configure and order your PowerTrac 0875 - 0200 SGT RA, with PRN Ball Nut,



<b>Inch Ball Screw</b>	
<b>(Screw)Product Info</b>	
Screw Code	0875-0200 SGT RA
Precision	SGT
Screw Material	4150
Thread Direction	RH
<b>(Screw)Details</b>	
Ball Circle Diameter [in]	0.875
Lead [in]	0.200
Root Diameter [in]	0.735
End Code for Types 1,2,3,5 [* Journals may show tracings of the thread]	17
End Code for Type 4 [* Journals may show tracings of the thread]	10
<b>(Screw)Performance Specifications</b>	
Lead Accuracy +/- [in./ft.]	0.0005
<b>(Screw)Part Numbers</b>	
2 ft. Part Number	
4 ft. Part Number	GT08720R48
6 ft. Part Number	
8 ft. Part Number	
12 ft. Part Number	
16 ft. Part Number	
20 ft. Part Number	
<b>(Screw)Weight</b>	
Screw Weight [lb./ft.]	1.80
<b>Inch Ball Nut, for SGT and XPR, Ground Accuracy, Preloaded, Fixed, PRN</b>	
<b>(Nut)Product Info</b>	
Ball Nut Number	PRN10110
Thread Direction	RH
<b>(Nut)Details</b>	
Ball Circle Diameter [in]	0.875
Lead [in]	0.200
Nominal Ball Diameter [in]	0.125
Root diameter [in]	0.735
<b>(Nut)Forces and Torques</b>	
Torque to Raise 1 lb. [in-lb]	0.035
<b>(Nut)Flange Part Numbers</b>	
Flange Part Number	FLG8281
<b>(Nut)Wiper Part Numbers</b>	
Wiper Kit Part Number	ELASTOMER
<b>(Nut)Weight</b>	
Nut Weight [lb]	1.10
<b>(Nut)Performance Specifications</b>	
Maximum Adjustable Preload [lb]	
Spring Rate x 10 <sup>6</sup> [lb./in.]	3.10
Dynamic Load [lb]	1375
Static Load [lb]	10780