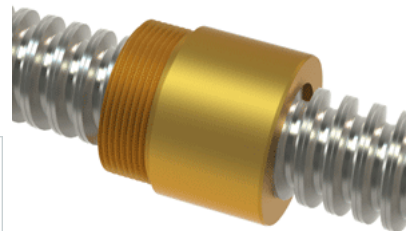
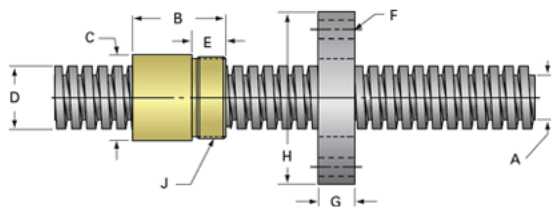


PowerAC Trapezoidal Assembly 904 RS w/Bronze Nut

Call 800-321-7800 or visit us online at www.nookindustries.com to configure and order your PowerAC Trapezoidal Assembly 904 RS w/Bronze Nut



Trapezoidal Lead Screw

(Screw)Product Info

Screw Code	904 RS
Screw Material	300 Series Stainless
Thread Direction	RH

(Screw)Details

Diameter	26
Lead	6
Starts	1
Pitch [mm]	6
Lead Accuracy +/- [$\frac{956}{m/25mm}$]	6.25
Thread Code	904
End Code for Types 1,2,3,5 [* Journals may show tracings of the thread]	17
End Code for Type 4 [* Journals may show tracings of the thread]	10

(Screw)Dimensions

A - Root Diameter Minimum [mm]	17.84
D - Nominal Rod Diameter	26

(Screw)Part Numbers

1800 mm Part Number	55904
3600 mm Part Number	56904
900 mm Part Number	54904

(Screw)Weight

Weight Per Meter [kg]	3.2
-----------------------	-----

Trapezoidal Lead Nut

(Nut)Product Info

Part Number	20904
Thread Direction	RH
Type	Bronze

(Nut)Details

Diameter	26
Lead [mm]	6
Starts	1
Pitch [mm]	6
Lash (Maximum Axial in) [mm]	0.30
Nominal Rod Diameter	26
Thread Code	904

(Nut)Dimensions

B [mm]	45.0
C [mm]	45.0
E [mm]	15.00
F (n) Dia. [mm]	(4) 7.00
F BCD [mm]	70.00
G [mm]	16.0
H [mm]	85.0
J [mm]	M40x15

(Nut)Forces and Torques

Torque to Raise 1 kN [Nm]	2.469
---------------------------	-------

(Nut)Flange Part Numbers

Flange Part Number	72004
--------------------	-------

(Nut)Weight

Flange Weight [kg]	0.54
Nut Weight [g]	440

(Nut)Performance Specifications

Efficiency [%]	39
Lead Accuracy +/- [$\frac{956}{m/25mm}$]	6.25
Dynamic Load Capacity [N]	23304
Static Load Capacity [N]	74573