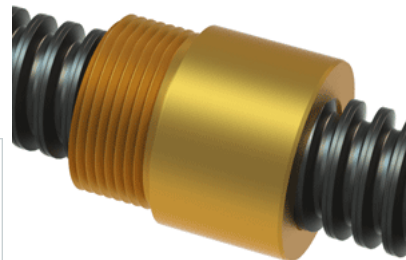
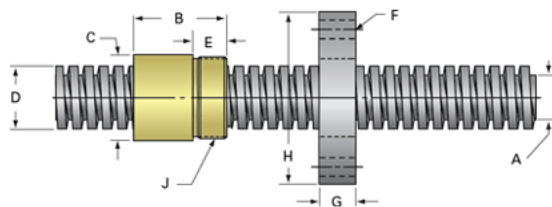


PowerAC Trapezoidal Assembly 903 RA w/Bronze Nut

Call 800-321-7800 or visit us online at www.nookindustries.com to configure and order your PowerAC Trapezoidal Assembly 903 RA w/Bronze Nut



Trapezoidal Lead Screw

(Screw)Product Info

Screw Code	903 RA
Screw Material	4140 Series
Thread Direction	RH

(Screw)Details

Diameter	20
Lead	4
Starts	1
Pitch [mm]	4
Lead Accuracy +/- [$\frac{1}{16}$ mm/25mm]	6.25
Thread Code	903
End Code for Types 1,2,3,5 [* Journals may show tracings of the thread]	12
End Code for Type 4 [* Journals may show tracings of the thread]	8

(Screw)Dimensions

A - Root Diameter Minimum [mm]	14.90
D - Nominal Rod Diameter	20

(Screw)Part Numbers

1800 mm Part Number	15903
3600 mm Part Number	16903
900 mm Part Number	14903

(Screw)Weight

Weight Per Meter [kg]	2
-----------------------	---

Trapezoidal Lead Nut

(Nut)Product Info

Part Number	20903
Thread Direction	RH
Type	Bronze

(Nut)Details

Diameter	20
Lead [mm]	4
Starts	1
Pitch [mm]	4
Lash (Maximum Axial in) [mm]	0.24
Nominal Rod Diameter	20
Thread Code	903

(Nut)Dimensions

B [mm]	32.0
C [mm]	34.0
E [mm]	13.00
F (n) Dia. [mm]	(4) 7.00
F BCD [mm]	60.00
G [mm]	14.0
H [mm]	75.0
J [mm]	M30x1.5

(Nut)Forces and Torques

Torque to Raise 1 kN [Nm]	1.818
---------------------------	-------

(Nut)Flange Part Numbers

Flange Part Number	72003
--------------------	-------

(Nut)Weight

Flange Weight [kg]	0.39
Nut Weight [g]	173

(Nut)Performance Specifications

Efficiency [%]	35
Lead Accuracy +/- [$\frac{1}{16}$ mm/25mm]	6.25
Dynamic Load Capacity [N]	13790
Static Load Capacity [N]	44128