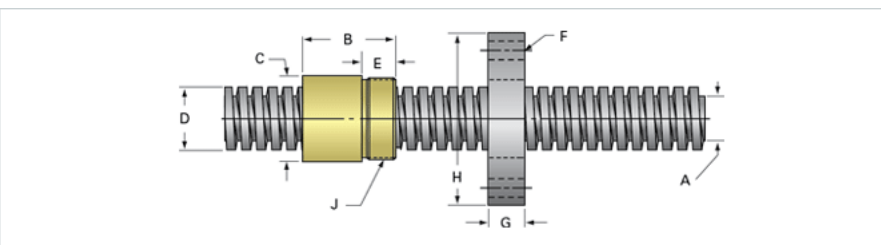
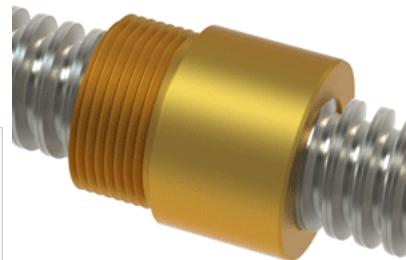


PowerAC 3/4"-6 RS w/Bronze Nut

Call 800-321-7800 or visit us online at www.nookindustries.com to configure and order your PowerAC 3/4"-6 RS w/Bronze Nut today!



| | |
|---|----------------------|
| Rolled Inch Acme Screw | |
| (Screw)Product Info | |
| Screw Code | 076-RS |
| Thread Direction | RH |
| Screw Material | 300 Series Stainless |
| (Screw)Details | |
| Lead [in] | 0.166 |
| Starts | 1 |
| Pitch [in] | 0.166 |
| Turns Per Inch | 6 |
| Threads per Inch | 6 |
| Thread Code | 076 |
| Form | 2C |
| End Code for Types 1,2,3,5 [* Journals may show tracings of the thread] | 12 |
| End Code for Type 4 [* Journals may show tracings of the thread] | 8 |
| (Screw)Dimensions | |
| A - Root Diameter Minimum [in] | 0.537 |
| D - Nominal Rod Diameter [in] | 0.750 |
| (Screw)Part Numbers | |
| 3 ft. Part Number | 91076 |
| 6 ft. Part Number | 92076 |
| 12 ft. Part Number | 93076 |
| 20 ft. Part Number | |
| (Screw)Performance Specifications | |
| Lead Accuracy +/- [in/in] | 0.0003 |
| (Screw)Weight | |
| Screw Weight [lb./ft.] | 1.17 |
| Inch Acme Nut with Optional Flange | |
| (Nut)Product Info | |
| Part Number | 20076 |
| Thread Direction | RH |
| Type | Bronze |
| (Nut)Details | |
| Lead [in] | 0.166 |
| Starts | 1 |
| Pitch [in] | 0.166 |
| Turns Per Inch | 6 |
| Lash (Maximum Axial) [in] | 0.008 |
| Nominal Rod Diameter [in] | 0.750 |
| Threads per Inch | 6 |
| Thread Code | 076 |
| Form | 2C |
| (Nut)Dimensions | |
| B [in] | 1.25 |
| C [in] | 1.13 |
| E [in] | 0.50 |
| F (n) Dia. [in] | (4) .266 |
| F BCD [in] | 2.090 |
| G [in] | 0.53 |
| H [in] | 2.63 |
| J [in] | 1.000-18 |
| (Nut)Forces and Torques | |
| Torque to Raise 1 lb. [in-lb] | 0.073 |
| (Nut)Flange Part Numbers | |
| Flange No-Lash Part Number | 73262 |
| Flange Part Number | 70262 |
| (Nut)Weight | |
| Flange Weight [lb] | 0.78 |
| Nut Weight [lb] | 0.23 |
| (Nut)Performance Specifications | |
| Efficiency [%] | 36 |

| | |
|----------------------------|--------|
| Lead Accuracy +/- [in/in] | 0.0003 |
| Dynamic Load Capacity [lb] | 2812 |
| Static Load Capacity [lb] | 9000 |