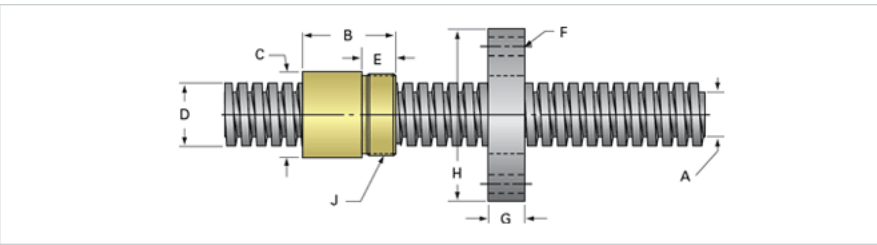
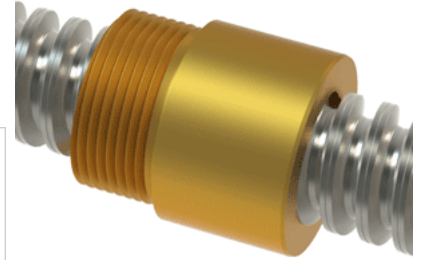


PowerAC 3/4"-5 RS w/Bronze Nut

Call 800-321-7800 or visit us online at www.nookindustries.com to configure and order your PowerAC 3/4"-5 RS w/Bronze Nut today!



Rolled Inch Acme Screw

(Screw)Product Info

| | |
|------------------|----------------------|
| Screw Code | 075-RS |
| Thread Direction | RH |
| Screw Material | 300 Series Stainless |

(Screw)Details

| | |
|---|-------|
| Lead [in] | 0.200 |
| Starts | 1 |
| Pitch [in] | 0.200 |
| Turns Per Inch | 5 |
| Threads per Inch | 5 |
| Thread Code | 075 |
| Form | 2C |
| End Code for Types 1,2,3,5 [* Journals may show tracings of the thread] | 12 |
| End Code for Type 4 [* Journals may show tracings of the thread] | 8 |

(Screw)Dimensions

| | |
|--------------------------------|-------|
| A - Root Diameter Minimum [in] | 0.502 |
| D - Nominal Rod Diameter [in] | 0.750 |

(Screw)Part Numbers

| | |
|--------------------|-------|
| 3 ft. Part Number | 91075 |
| 6 ft. Part Number | 92075 |
| 12 ft. Part Number | 93075 |
| 20 ft. Part Number | |

(Screw)Performance Specifications

| | |
|---------------------------|--------|
| Lead Accuracy +/- [in/in] | 0.0003 |
|---------------------------|--------|

(Screw)Weight

| | |
|------------------------|------|
| Screw Weight [lb./ft.] | 1.23 |
|------------------------|------|

Inch Acme Nut with Optional Flange

(Nut)Product Info

| | |
|------------------|--------|
| Part Number | 20075 |
| Thread Direction | RH |
| Type | Bronze |

(Nut)Details

| | |
|---------------------------|-------|
| Lead [in] | 0.200 |
| Starts | 1 |
| Pitch [in] | 0.200 |
| Turns Per Inch | 5 |
| Lash (Maximum Axial) [in] | 0.009 |
| Nominal Rod Diameter [in] | 0.750 |
| Threads per Inch | 5 |
| Thread Code | 075 |
| Form | 2C |

(Nut)Dimensions

| | |
|-----------------|----------|
| B [in] | 1.25 |
| C [in] | 1.13 |
| E [in] | 0.50 |
| F (n) Dia. [in] | (4) .266 |
| F BCD [in] | 2.090 |
| G [in] | 0.53 |
| H [in] | 2.63 |
| J [in] | 1.000-18 |

(Nut)Forces and Torques

| | |
|-------------------------------|-------|
| Torque to Raise 1 lb. [in-lb] | 0.080 |
|-------------------------------|-------|

(Nut)Flange Part Numbers

| | |
|----------------------------|-------|
| Flange No-Lash Part Number | 73262 |
| Flange Part Number | 70262 |

(Nut)Weight

| | |
|--------------------|------|
| Flange Weight [lb] | 0.78 |
| Nut Weight [lb] | 0.24 |

(Nut)Performance Specifications

| | |
|----------------|----|
| Efficiency [%] | 40 |
|----------------|----|

| | |
|----------------------------|--------|
| Lead Accuracy +/- [in/in] | 0.0003 |
| Dynamic Load Capacity [lb] | 2812 |
| Static Load Capacity [lb] | 9000 |