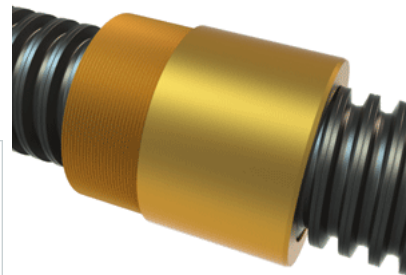


PowerAC 3 3/4"-1 1/2 RA w/Bronze Nut

Call 800-321-7800 or visit us online at www.nookindustries.com to configure and order your PowerAC 3 3/4"-1 1/2 RA w/Bronze Nut today!



Rolled Inch Acme Screw

(Screw)Product Info

| | |
|------------------|-------------|
| Screw Code | 372-RA |
| Thread Direction | RH |
| Screw Material | 4140 Series |

(Screw)Details

| | |
|---|-------|
| Lead [in] | 0.667 |
| Starts | 1 |
| Pitch [in] | 0.667 |
| Turns Per Inch | 1.5 |
| Threads per Inch | 1.5 |
| Thread Code | 372 |
| Form | 2G |
| End Code for Types 1,2,3,5 [* Journals may show tracings of the thread] | 75 |
| End Code for Type 4 [* Journals may show tracings of the thread] | 48 |

(Screw)Dimensions

| | |
|--------------------------------|-------|
| A - Root Diameter Minimum [in] | 3.009 |
| D - Nominal Rod Diameter [in] | 3.750 |

(Screw)Part Numbers

| | |
|--------------------|-------|
| 3 ft. Part Number | |
| 6 ft. Part Number | 12372 |
| 12 ft. Part Number | 13372 |
| 20 ft. Part Number | 10372 |

(Screw)Performance Specifications

| | |
|---------------------------|--------|
| Lead Accuracy +/- [in/in] | 0.0006 |
|---------------------------|--------|

(Screw)Weight

| | |
|------------------------|-------|
| Screw Weight [lb./ft.] | 38.30 |
|------------------------|-------|

Inch Acme Nut with Optional Flange

(Nut)Product Info

| | |
|------------------|--------|
| Part Number | 20372 |
| Thread Direction | RH |
| Type | Bronze |

(Nut)Details

| | |
|---------------------------|-------|
| Lead [in] | 0.667 |
| Starts | 1 |
| Pitch [in] | 0.667 |
| Turns Per Inch | 1.5 |
| Lash (Maximum Axial) [in] | 0.020 |
| Nominal Rod Diameter [in] | 3.750 |
| Threads per Inch | 1.5 |
| Thread Code | 372 |
| Form | 2G |

(Nut)Dimensions

| | |
|-----------------|----------|
| B [in] | 5.50 |
| C [in] | 5.00 |
| E [in] | 2.00 |
| F (n) Dia. [in] | (4) 1.06 |
| F BCD [in] | 7.000 |
| G [in] | 2.02 |
| H [in] | 9.00 |
| J [in] | 4.750-12 |

(Nut)Forces and Torques

| | |
|-------------------------------|-------|
| Torque to Raise 1 lb. [in-lb] | 0.345 |
|-------------------------------|-------|

(Nut)Flange Part Numbers

| | |
|----------------------------|-------|
| Flange No-Lash Part Number | 73372 |
| Flange Part Number | 70775 |

(Nut)Weight

| | |
|--------------------|-------|
| Flange Weight [lb] | 23.82 |
| Nut Weight [lb] | 16.89 |

(Nut)Performance Specifications

| | |
|----------------|----|
| Efficiency [%] | 30 |
|----------------|----|

| | |
|----------------------------|--------|
| Lead Accuracy +/- [in/in] | 0.0006 |
| Dynamic Load Capacity [lb] | 81000 |
| Static Load Capacity [lb] | 260000 |